

Recombinant Human LRRC41 Protein, Myc/DDK-tagged, C13 and N15-labeled

Cat. No. LRRC41-1098H **Lot. No.** (See product label)

SPECIFICATION

Product Overview	LRRC41 MS Standard C13 and N15-labeled recombinant protein (NP_006360) with a C-terminal MYC/DDK tag, was expressed in HEK293 cells.
Species	Human
Source	HEK293
Description	LRRC41 (Leucine Rich Repeat Containing 41) is a Protein Coding gene. Diseases associated with LRRC41 include Xia-Gibbs Syndrome. Among its related pathways are Innate Immune System and Class I MHC mediated antigen processing and presentation. Gene Ontology (GO) annotations related to this gene include protein homodimerization activity.
Molecular Mass	88.7 kDa
AA Sequence	<p>MAAPEAWRARSWCFEVAATTMEATSREAAPAKSSASGPNAPPALFELCGRAVS AHMGVLESGVWALPGPILQSILPLLNIYYLERIEETALKKGLSTQAIWRRLWDELMKT RPSSLESVTCWRAKFMEAFFSHVLRGTIDVSSDRRLCDQRFSPLLHSSRHVRQLTIC NMLQGATELVAEPNRRVLETASSLHTLKFRHLLFSDVAAQQSLRQLLHQLIHHGAV SQVSLYSWPVPESALFILTMSAGFWQPGPGGPPCRLCGEASRGRAPSRDEGSLL LGSRRPRRDAAERCAAALMASRRKSEAKQMPRAAPATRVTRRSTQESLTAGGTDL KRELHPPATSHEAPGTRSPSAPAATSSASSSTSSYKRAPASSAPQPKPLKRFKRA AGKKGARTRQGPGESEDLYDFVIVAGEKEDGEEMEIGEIVACGALDGSDPSCGLG</p>

 Tel: 1-631-559-9269 1-516-512-3133

 Email: info@creative-biomart.com  Fax: 1-631-938-8127

 45-1 Ramsey Road, Shirley, NY 11967, USA



PALEASQRFRSISTLELFTVPLSTEAAALTLCHLLSSWVSLESITLSYNGLGSNIFRLLD
 SLRALSGQAGCRLRALHLSDFSPLELTRAIVRALPLLRVLSIRVDHPSQRDNGV
 PGNAGPPSHIIGDEEIPENCLEQLEMGFPRGAQPAPLLCSILKASGSLQQLSLDSATF
 ASPQDFGLVLQTLKEYNLALKRLSFHDMNLADCQSEVLFLLQNLTQEITFSFCRLF
 KRPAQFLPEMVAAMKGNSTLKGLRPGNRLGNAGLLALADVSESSSSLCQLDISS
 NCIKPDGLLEFAKRLERWGRGAFGHLRLFQNWLDQDAVTAREAIRRLRATCHVVSD
 SWDSSQAFADYVSTMTRTRPLEQKLISEEDLAANDILDYKDDDDKV

Purity	> 80% as determined by SDS-PAGE and Coomassie blue staining
Stability	Stable for 3 months from receipt of products under proper storage and handling conditions.
Storage	Store at -80 centigrade. Avoid repeated freeze-thaw cycles.
Concentration	50 µg/mL as determined by BCA
Storage Buffer	100 mM glycine, 25 mM Tris-HCl, pH 7.3.

GENE INFORMATION

Gene Name	LRRC41 leucine rich repeat containing 41 [Homo sapiens (human)]
Official Symbol	LRRC41
Synonyms	LRRC41; leucine rich repeat containing 41; leucine-rich repeat-containing protein 41; MUF1; protein Muf1; MUF1 protein (MUF1); elongin BC-interacting leucine-rich repeat protein; PP7759; RP4-636H5.2; MGC126571; MGC126573;
Gene ID	10489

Tel: 1-631-559-9269 1-516-512-3133

Email: info@creative-biomart.com Fax: 1-631-938-8127

45-1 Ramsey Road, Shirley, NY 11967, USA

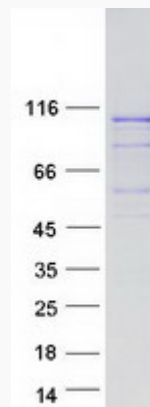
mRNA Refseq [NM_006369](#)

Protein Refseq [NP_006360](#)

MIM [618753](#)

UniProt ID [Q15345](#)

SDS-PAGE



 Tel: 1-631-559-9269 1-516-512-3133

 Email: info@creative-biomart.com  Fax: 1-631-938-8127

 45-1 Ramsey Road, Shirley, NY 11967, USA