

Recombinant Human LRRC41 Protein, GST-tagged

Cat. No. LRRC41-4666H **Lot. No.** (See product label)

SPECIFICATION

Product Overview	Human LRRC41 partial ORF (NP_006360, 86 a.a. - 195 a.a.) recombinant protein with GST-tag at N-terminal.
Species	Human
Source	Wheat Germ
Description	LRRC41 (Leucine Rich Repeat Containing 41) is a Protein Coding gene. Among its related pathways are Innate Immune System and Class I MHC mediated antigen processing and presentation. GO annotations related to this gene include protein homodimerization activity.
Molecular Mass	37.84 kDa
AA Sequence	ERIEETALKKGLSTQAIWRRLWDELMKTRPSSLESVTCWRAKFMEAFFSHVLRGTID VSSDRRLCDQRFSPLLHSSRHVRQLTICNMLQGATELVAEPNRRVLETASSL
Applications	Enzyme-linked Immunoabsorbent Assay Western Blot (Recombinant protein) Antibody Production Protein Array
Notes	Best use within three months from the date of receipt of this protein.
Storage	Store at -80 centigrade. Aliquot to avoid repeated freezing and thawing.

 Tel: 1-631-559-9269 1-516-512-3133

 Email: info@creative-biomart.com  Fax: 1-631-938-8127

 45-1 Ramsey Road, Shirley, NY 11967, USA

Storage Buffer 50 mM Tris-HCl, 10 mM reduced Glutathione, pH=8.0 in the elution buffer.

GENE INFORMATION

Gene Name LRRC41 leucine rich repeat containing 41 [Homo sapiens]

Official Symbol LRRC41

Synonyms LRRC41; leucine rich repeat containing 41; leucine-rich repeat-containing protein 41; MUF1; protein Muf1; MUF1 protein (MUF1); elongin BC-interacting leucine-rich repeat protein; PP7759; RP4-636H5.2; MGC126571; MGC126573;

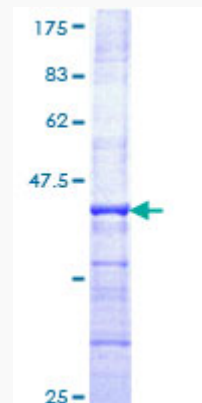
Gene ID 10489

mRNA Refseq NM_006369

Protein Refseq NP_006360

UniProt ID Q15345

Quality Control Testing



12.5% SDS-PAGE Stained with Coomassie Blue

Tel: 1-631-559-9269 1-516-512-3133

Email: info@creative-biomart.com Fax: 1-631-938-8127

45-1 Ramsey Road, Shirley, NY 11967, USA