

Recombinant Human LRRC46 Protein, Myc/DDK-tagged, C13 and N15-labeled

Cat. No. LRRC46-1191H **Lot. No.** (See product label)

SPECIFICATION

Product Overview	LRRC46 MS Standard C13 and N15-labeled recombinant protein (NP_219481) with a C-terminal MYC/DDK tag, was expressed in HEK293 cells.
Species	Human
Source	HEK293
Description	LRRC46 (Leucine Rich Repeat Containing 46) is a Protein Coding gene. Diseases associated with LRRC46 include Primary Ciliary Dyskinesia. An important paralog of this gene is LRGUK.
Molecular Mass	35.3 kDa
AA Sequence	MSGGKSAQGPEEGGVCITEALITKRNLTFPEDGELSEKMFHTLDELQTVRLDREGIT TIRNLEGLQNLHSLYLQGNKIQQIENLACIPSLRFLSLAGNQIRQVENLLDLPCLQFLD LSENLIELTKLDEFQSLILNLSGNSCTNQDGYRELVTEALPLLLDLGQPVVERWIS DEEDEASSDEEFPELSGPFCSERGFLEKELEQELSRHREHRQQTALTEHLLRMEMQP TLTDLPLLPVPMAGDSSPSATPAQGEETVPEAVSSPQASSPTKKPCSLIPRGHQSS FWGRKGGARAATAPKASVAEAPSTTKTTAKRSKTRTRPLEQKLISEEDLAANDILDY KDDDDKV
Purity	> 80% as determined by SDS-PAGE and Coomassie blue staining
Stability	Stable for 3 months from receipt of products under proper storage and handling

 Tel: 1-631-559-9269 1-516-512-3133

 Email: info@creative-biomart.com  Fax: 1-631-938-8127

 45-1 Ramsey Road, Shirley, NY 11967, USA

conditions.

Storage Store at -80 centigrade. Avoid repeated freeze-thaw cycles.

Concentration 50 µg/mL as determined by BCA

Storage Buffer 100 mM glycine, 25 mM Tris-HCl, pH 7.3.

GENE INFORMATION

Gene Name LRRC46 leucine rich repeat containing 46 [Homo sapiens (human)]

Official Symbol LRRC46

Synonyms LRRC46; leucine rich repeat containing 46; leucine-rich repeat-containing protein 46;

Gene ID 90506

mRNA Refseq NM_033413

Protein Refseq NP_219481

UniProt ID Q96FV0

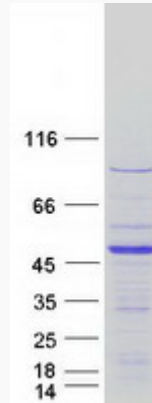
 Tel: 1-631-559-9269 1-516-512-3133

 Email: info@creative-biomart.com  Fax: 1-631-938-8127

 45-1 Ramsey Road, Shirley, NY 11967, USA



SDS-PAGE



☎ Tel: 1-631-559-9269 1-516-512-3133

☎ Email: info@creative-biomart.com ☎ Fax: 1-631-938-8127

☎ 45-1 Ramsey Road, Shirley, NY 11967, USA