

Recombinant Human LRRC4C Protein, GST-tagged

Cat. No. LRRC4C-4657H Lot. No. (See product label)

SPECIFICATION

Product Overview	Human LRRC4C full-length ORF (NP_065980.1, 1 a.a. - 640 a.a.) recombinant protein with GST-tag at N-terminal.
Species	Human
Source	Wheat Germ
Description	NGL1 is a specific binding partner for netrin G1 (NTNG1; MIM 608818), which is a member of the netrin family of axon guidance molecules (Lin et al., 2003 [PubMed 14595443]).[supplied by OMIM
Molecular Mass	98.3 kDa
AA Sequence	MLNKMTLHPQQIMIGPRFNALFDPLLVLALQLLVVAGLVRAQTCPSVCSCSNQF SKVICVRKNLREVPDGISTNTRLLNLHENQIQIIVNSFKHLRHLEILQLSRNHIRTIEIG AFNGLANLNTLELFDNRLTTIPNGAFVYLSKLELWLRNNPIESIPSYAFNRIPSLRRL DLGELKRLSYISEGAFEGLSNLRYNLAMCNLREIPNLTPLIKLDELDSLGNHLSAIRP GSFQGLMHLQKLWMIQSQIQVIERNAFDNLQSLVEINLAHNNLTLPHDLFTPLHHLE RIHLHHPWNCNCDILWLSWWIKDMAPSNTACCARCNTPPNLKGRYIGELDQNYFT CYAPVIVEPPADLNVTEGMAAELKCRASLTSVSWITPNGTVMTHGAYKVRIAVLS DGTLNFTNVTVQDTGMYTCMVSNSVGNNTASATLNVTAAATTPFSYFSTVTVETME PSQDEARTTDNNVGPTPVVDWETTNTTSLTPQSTRSTFKTFTIPVTDINSGIPGIDE VMKTTKIIIGCFVAITLMAAVMLVIFYKMRKQHRQNHHPTRTVEIINVDDDEITGDTP MESHLPMPAIEHEHLNHYSYKSPFNHTTTVNTINSIHSSVHEPLLIRMNSKDNVQET

Tel: 1-631-559-9269 1-516-512-3133

Email: info@creative-biomart.com Fax: 1-631-938-8127

45-1 Ramsey Road, Shirley, NY 11967, USA

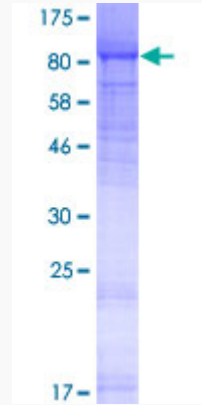
	QI
Applications	Enzyme-linked Immunoabsorbent Assay Western Blot (Recombinant protein) Antibody Production Protein Array
Notes	Best use within three months from the date of receipt of this protein.
Storage	Store at -80 centigrade. Aliquot to avoid repeated freezing and thawing.
Storage Buffer	50 mM Tris-HCl, 10 mM reduced Glutathione, pH=8.0 in the elution buffer.
GENE INFORMATION	
Gene Name	LRRC4C leucine rich repeat containing 4C [Homo sapiens]
Official Symbol	LRRC4C
Synonyms	LRRC4C; leucine rich repeat containing 4C; leucine-rich repeat-containing protein 4C; KIAA1580; NGL 1; netrin-G1 ligand; NGL1; NGL-1;
Gene ID	57689
mRNA Refseq	NM_020929
Protein Refseq	NP_065980
MIM	608817
UniProt ID	Q9HCJ2

 Tel: 1-631-559-9269 1-516-512-3133

 Email: info@creative-biomart.com  Fax: 1-631-938-8127

 45-1 Ramsey Road, Shirley, NY 11967, USA

**Quality Control
Testing**



12.5% SDS-PAGE Stained with Coomassie Blue

 Tel: 1-631-559-9269 1-516-512-3133

 Email: info@creative-biomart.com  Fax: 1-631-938-8127

 45-1 Ramsey Road, Shirley, NY 11967, USA