

Recombinant Human LRRC6 Protein, GST-tagged

Cat. No. LRRC6-4648H Lot. No. (See product label)

SPECIFICATION

Product Overview Human LRRC6 full-length ORF (NP_036604.2, 1 a.a. - 466 a.a.) recombinant protein with GST-tag at N-terminal.

Species Human

Source Wheat Germ

Description The protein encoded by this gene contains several leucine-rich repeat domains and appears to be involved in the motility of cilia. Defects in this gene are a cause of primary ciliary dyskinesia-19 (CILD19). Alternative splicing of this gene results in multiple transcript variants. Related pseudogenes have been identified on chromosomes 4, 11 and 22. [provided by RefSeq, Apr 2016]

Molecular Mass 80.7 kDa

AA Sequence

```

MGWITEDLIRRNAEHNDCVIFSLEELSLHQQEIERLEHIDKWCRDLKILYLQNNLIGKIE
NVSKLKKLEYLNLALNIEKIEENLEGCEELAKLDLTVNFIGELSSIKNLQHNHLKELFL
MGNPCASFDHYREFVVATLPQLKWLDGKEIEPSERIKALQDYSVIEPQIREQEKDHC
LKRAKLKEEAQRKHQEEDKNEDKRSNAGFDGRWYTDINATLSSLESKDHLQAPDTE
EHNTKKLDNSEDDLEFWNKPCLFTPESRLETLRHMEKQRKKQEKLSEKKKKVKPPR
TLITEDGKALNVNEPKIDFSLKDNEKQIILDVYRYMDTSLIDVDVQPTYVVRVMIKGG
PFQLVLPAEVKPDSSSAKRSQTTGHLVICMPKVGEVITGGQRAFKSMKTTSDRSRE
QTNTRSKHMEKLEVDPSKHSFPDVTNIVQEKKHTPRRRPEPKIIPSEEDPTFEDNPE
VPPLI
    
```

 Tel: 1-631-559-9269 1-516-512-3133

 Email: info@creative-biomart.com  Fax: 1-631-938-8127

 45-1 Ramsey Road, Shirley, NY 11967, USA

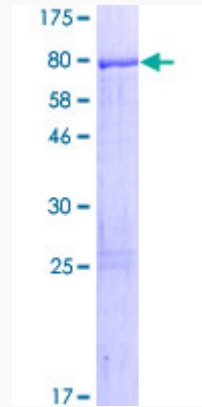
Applications	Enzyme-linked Immunoabsorbent Assay Western Blot (Recombinant protein) Antibody Production Protein Array
Notes	Best use within three months from the date of receipt of this protein.
Storage	Store at -80 centigrade. Aliquot to avoid repeated freezing and thawing.
Storage Buffer	50 mM Tris-HCl, 10 mM reduced Glutathione, pH=8.0 in the elution buffer.
GENE INFORMATION	
Gene Name	LRRC6 leucine rich repeat containing 6 [Homo sapiens]
Official Symbol	LRRC6
Synonyms	LRRC6; leucine rich repeat containing 6; protein TILB homolog; leucine rich testes protein; LRTP; TSLRP; leucine-rich testis-specific protein; leucine-rich repeat-containing protein 6; testis specific leucine rich repeat protein; testis-specific leucine-rich repeat protein;
Gene ID	23639
mRNA Refseq	NM_012472
Protein Refseq	NP_036604
UniProt ID	Q86X45

 Tel: 1-631-559-9269 1-516-512-3133

 Email: info@creative-biomart.com  Fax: 1-631-938-8127

 45-1 Ramsey Road, Shirley, NY 11967, USA

**Quality Control
Testing**



12.5% SDS-PAGE Stained with Coomassie Blue

 Tel: 1-631-559-9269 1-516-512-3133

 Email: info@creative-biomart.com  Fax: 1-631-938-8127

 45-1 Ramsey Road, Shirley, NY 11967, USA