

Recombinant Human LRRC61 Protein, GST-tagged

Cat. No. LRRC61-4647H Lot. No. (See product label)

SPECIFICATION

Product Overview	Human LRRC61 full-length ORF (NP_076431.1, 1 a.a. - 259 a.a.) recombinant protein with GST-tag at N-terminal.
Species	Human
Source	Wheat Germ
Description	LRRC61 (Leucine Rich Repeat Containing 61) is a Protein Coding gene.
Molecular Mass	54.4 kDa
AA Sequence	MDPPAEKPGEAGGLQITPQLLKSRTGEFSLESILLKLRGLGLADLGCLGECLEW LDLSGNALHLGPLASLRQLAVLNVSNNRLTGLEPLATCENLQSLNAAGNLLATPGQ LQCLAGLPCLEYLRLRDPLARLSNPLCANPSYWAAVRELLPGLKVIDGERVIGRGSE FYQLCRDLDSLRPSSSPGPRATEAQPWVEPGYWESWPSRSSSILEEACRQFQDT LQECWDLDRQASDSLAQAEQVLSSAGPTSSFVF
Applications	Enzyme-linked Immunoabsorbent Assay Western Blot (Recombinant protein) Antibody Production Protein Array
Notes	Best use within three months from the date of receipt of this protein.
Storage	Store at -80 centigrade. Aliquot to avoid repeated freezing and thawing.

 Tel: 1-631-559-9269 1-516-512-3133

 Email: info@creative-biomart.com  Fax: 1-631-938-8127

 45-1 Ramsey Road, Shirley, NY 11967, USA

Storage Buffer 50 mM Tris-HCl, 10 mM reduced Glutathione, pH=8.0 in the elution buffer.

GENE INFORMATION

Gene Name LRRC61 leucine rich repeat containing 61 [Homo sapiens]

Official Symbol LRRC61

Synonyms LRRC61; leucine rich repeat containing 61; leucine-rich repeat-containing protein 61; FLJ31392; HSPC295; MGC3036; FLJ22216;

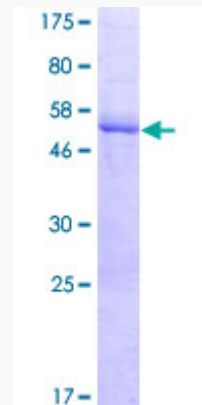
Gene ID 65999

mRNA Refseq NM_001142928

Protein Refseq NP_001136400

UniProt ID Q9BV99

Quality Control Testing



12.5% SDS-PAGE Stained with Coomassie Blue

 Tel: 1-631-559-9269 1-516-512-3133

 Email: info@creative-biomart.com  Fax: 1-631-938-8127

 45-1 Ramsey Road, Shirley, NY 11967, USA