

# Recombinant Human LRRC8A Protein, Myc/DDK-tagged, C13 and N15-labeled

**Cat. No.** LRRC8A-4533H    **Lot. No.** (See product label)

## SPECIFICATION

<b>Product Overview</b>	LRRC8A MS Standard C13 and N15-labeled recombinant protein (NP_062540) with a C-terminal MYC/DDK tag, was expressed in HEK293 cells.
<b>Species</b>	Human
<b>Source</b>	HEK293
<b>Description</b>	This gene encodes a protein belonging to the leucine-rich repeat family of proteins, which are involved in diverse biological processes, including cell adhesion, cellular trafficking, and hormone-receptor interactions. This family member is a putative four-pass transmembrane protein that plays a role in B cell development. Defects in this gene cause autosomal dominant non-Bruton type agammaglobulinemia, an immunodeficiency disease resulting from defects in B cell maturation. Multiple alternatively spliced transcript variants, which encode the same protein, have been identified for this gene.
<b>Molecular Mass</b>	94.2 kDa
<b>AA Sequence</b>	MIPVTELRVFADTQPAYRILKPWWVDVFTDYISIVMLMIAVFGGTLQVTQDKMICLPCK WVKDSCNDSFRGWAAPGPEPTYPNSTILPTPDTGPTGIKYDLDRHQYNYVDAVCY ENRLHWFAYKYPYLVLHLLIFLACSNFWFKFPRRTSSKLEHFVSILLKCFDSPWTTTRA LSETVVEESDPKPAFSKMNGSMDKKSSTVSEDVEATVPMLQRTKSRIEQGIVDRSE TGVLDKKEGEQAKALFEKVKKFRTHVEEGDIVRLYMRQTIKVIKFIICITYVYVHNI

 Tel: 1-631-559-9269    1-516-512-3133

 Email: [info@creative-biomart.com](mailto:info@creative-biomart.com)     Fax: 1-631-938-8127

 45-1 Ramsey Road, Shirley, NY 11967, USA

KFDVDCTVDIESLTGYR TYRCAHPLATLFKILASFYISLVIFYGLICMYTLWWMLRRSL  
 KKYSFESIREESSYSDIPDVKNDFAFMLHLIDQYDPLYSKRFAVFLSEVSENKLRQLN  
 LNNEWTLDKLRQRLTKNAQDKLELHLFMLS GIPDTVFDLVELEVLKLELIPDVTIPPSI  
 AQLTGLKELWLYHTAAKIEAPALAF LRENLRALHIKFTDIKEIPLWIYSLKTLEELHLTG  
 NLSAENNR YIVIDGLRELKRLKVLRLKSNLSKLPQVVTDVGVHLQKLSINNEGTKLIVL  
 NSLK KMANLTELELIRCDLERIPHSIFSLHNLQEIDLKDN NLKTIEEII SFQHLHRLTCLK  
 LWYNHAIYIPIQIGNLTNLERLYLNRNKIEKIPTQLFYCRKLR YLDLSHNNLTFLPADIGL  
 LQNLQNLAITANRIETLPP ELFQCRKLRALHLGNNVLQSLPSRVGELTNLTQIELRGN  
 RLECLPVELGECPLLKRSGLVVEEDLFNTLPPEVKERLWRADKEQATRTRPLEQKLI  
 SEEDLAANDILDYKDDDDKV

**Purity** > 80% as determined by SDS-PAGE and Coomassie blue staining

**Stability** Stable for 3 months from receipt of products under proper storage and handling conditions.

**Storage** Store at -80 centigrade. Avoid repeated freeze-thaw cycles.

**Concentration** 50 µg/mL as determined by BCA

**Storage Buffer** 100 mM glycine, 25 mM Tris-HCl, pH 7.3.

## GENE INFORMATION

**Gene Name** [LRRC8A leucine rich repeat containing 8 VRAC subunit A \[ Homo sapiens \(human\) \]](#)

**Official Symbol** [LRRC8A](#)

**Synonyms** LRRC8A; leucine rich repeat containing 8 VRAC subunit A; AGM5; LRRC8; SWELL1; volume-regulated anion channel subunit LRRC8A; leucine rich repeat containing 8 family member A; leucine-rich repeat-containing protein 8A; swelling protein 1

 Tel: 1-631-559-9269 1-516-512-3133

 Email: [info@creative-biomart.com](mailto:info@creative-biomart.com)  Fax: 1-631-938-8127

 45-1 Ramsey Road, Shirley, NY 11967, USA

**Gene ID** 56262

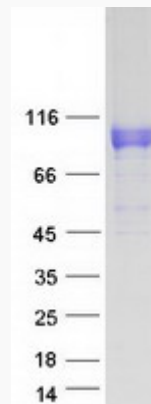
**mRNA Refseq** NM\_019594

**Protein Refseq** NP\_062540

**MIM** 608360

**UniProt ID** Q8IWT6

**SDS-PAGE**



 Tel: 1-631-559-9269 1-516-512-3133

 Email: [info@creative-biomart.com](mailto:info@creative-biomart.com)  Fax: 1-631-938-8127

 45-1 Ramsey Road, Shirley, NY 11967, USA