

Recombinant Human LRRC8A Protein, GST-tagged

Cat. No. LRRC8A-4646H **Lot. No.** (See product label)

SPECIFICATION

Product Overview	Human LRRC8A partial ORF (NP_062540.2, 711 a.a. - 810 a.a.) recombinant protein with GST-tag at N-terminal.
Species	Human
Source	Wheat Germ
Description	This gene encodes a protein belonging to the leucine-rich repeat family of proteins, which are involved in diverse biological processes, including cell adhesion, cellular trafficking, and hormone-receptor interactions. This family member is a putative four-pass transmembrane protein that plays a role in B cell development. Defects in this gene cause autosomal dominant non-Bruton type agammaglobulinemia, an immunodeficiency disease resulting from defects in B cell maturation. Multiple alternatively spliced transcript variants, which encode the same protein, have been identified for this gene. [provided by RefSeq]
Molecular Mass	36.74 kDa
AA Sequence	QNLAITANRIETLPPELFQCRKLRALHLGNNVLQSLPSRVGELTNLTQIELRGNRLEC LPVELGECPLLKRSGLVVEEDLFNTLPPEVKERLWRADKEQA
Applications	Enzyme-linked Immunoabsorbent Assay Western Blot (Recombinant protein) Antibody Production Protein Array

 Tel: 1-631-559-9269 1-516-512-3133

 Email: info@creative-biomart.com  Fax: 1-631-938-8127

 45-1 Ramsey Road, Shirley, NY 11967, USA

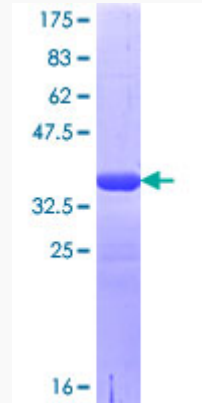
Notes	Best use within three months from the date of receipt of this protein.
Storage	Store at -80 centigrade. Aliquot to avoid repeated freezing and thawing.
Storage Buffer	50 mM Tris-HCl, 10 mM reduced Glutathione, pH=8.0 in the elution buffer.
GENE INFORMATION	
Gene Name	LRRC8A leucine rich repeat containing 8 VRAC subunit A [Homo sapiens (human)]
Official Symbol	LRRC8A
Synonyms	LRRC8A; leucine rich repeat containing 8 VRAC subunit A; AGM5; LRRC8; SWELL1; volume-regulated anion channel subunit LRRC8A; leucine rich repeat containing 8 family member A; leucine-rich repeat-containing protein 8A; swelling protein 1
Gene ID	https://www.ncbi.nlm.nih.gov/gene/?term=56262
mRNA Refseq	NM_001127244
Protein Refseq	NP_001120716
MIM	608360
UniProt ID	Q8IWT6

 Tel: 1-631-559-9269 1-516-512-3133

 Email: info@creative-biomart.com  Fax: 1-631-938-8127

 45-1 Ramsey Road, Shirley, NY 11967, USA

**Quality Control
Testing**



12.5% SDS-PAGE Stained with Coomassie Blue

 Tel: 1-631-559-9269 1-516-512-3133

 Email: info@creative-biomart.com  Fax: 1-631-938-8127

 45-1 Ramsey Road, Shirley, NY 11967, USA