

Recombinant Human LRRC8A Protein, Myc/DDK-tagged, C13 and N15-labeled

Cat. No. LRRC8A-677H **Lot. No.** (See product label)

SPECIFICATION

Product Overview	LRRC8A MS Standard C13 and N15-labeled recombinant protein (NP_001120716) with a C-terminal MYC/DDK tag, was expressed in HEK293 cells.
Species	Human
Source	HEK293
Description	This gene encodes a protein belonging to the leucine-rich repeat family of proteins, which are involved in diverse biological processes, including cell adhesion, cellular trafficking, and hormone-receptor interactions. This family member is a putative four-pass transmembrane protein that plays a role in B cell development. Defects in this gene cause autosomal dominant non-Bruton type agammaglobulinemia, an immunodeficiency disease resulting from defects in B cell maturation. Multiple alternatively spliced transcript variants, which encode the same protein, have been identified for this gene.
Molecular Mass	94.2 kDa
AA Sequence	MIPVTELRVFADTQPAYRILKPWWVDVFTDYISIVMLMIAVFGGTLQVTQDKMICLPCK WVKDSCNDSFRGWAAPGPEPTYPNSTILPTPDTGPTGIKYDLDRHQYNYVDAVCY ENRLHWFAYKYPYLVLHLLIFLACSNFWFKFPRTSKLEHFVSILLKCFDSPWTTTRA LSETVVEESDPKPAFSKMNGSMDKKSSTVSEDVEATVPMLQRTKSRIEQGIVDRSE TGVLDKKEGEQAKALFEKVKKFRTHVEEGDIVRLYMRQTIKVIKFIICITVYVYVHNI

 Tel: 1-631-559-9269 1-516-512-3133

 Email: info@creative-biomart.com  Fax: 1-631-938-8127

 45-1 Ramsey Road, Shirley, NY 11967, USA

KFDVDCTVDIESLTGYR TYRCAHPLATLFKILASFYISLVIFYGLICMYTLWWMLRRSL
 KKYSFESIREESSYSDIPDVKNDFAFMLHLIDQYDPLYSKRFAVFLSEVSENKLRQLN
 LNNEWTLDKLRQRLTKNAQDKLELHLFMLS GIPDTVFDLVELEVLKLELIPDVTIPPSI
 AQLTGLKELWLYHTAAKIEAPALAF LRENLRALHIKFTDIKEIPLWIYSLKTLEELHLTG
 NLSAENNR YIVIDGLRELKRLKVLRLKSNLSKLPQVVTDVGVHLQKLSINNEGTKLIVL
 NSLK KMANLTELELIRCDLERIPHSIFSLHNLQEIDLKDN NLKTIEEII SFQHLHRLTCLK
 LWYNHIAIPIQIGNLTNLERLYLNRNKIEKIPTQLFYCRKLR YLDLSHNNLTFLPADIGL
 LQNLQNLAITANRIETLPP ELFQCRKLRALHLGNNVLQSLPSRVGELTNLTQIELRGN
 RLECLPVELGECPLLKRSGLVVEEDLFNTLPPEVKERLWRADKEQATRTRPLEQKLI
 SEEDLAANDILDYKDDDDKV

Purity > 80% as determined by SDS-PAGE and Coomassie blue staining

Stability Stable for 3 months from receipt of products under proper storage and handling conditions.

Storage Store at -80 centigrade. Avoid repeated freeze-thaw cycles.

Concentration 50 µg/mL as determined by BCA

Storage Buffer 100 mM glycine, 25 mM Tris-HCl, pH 7.3.

GENE INFORMATION

Gene Name [LRRRC8A leucine rich repeat containing 8 VRAC subunit A \[Homo sapiens \(human\) \]](#)

Official Symbol [LRRRC8A](#)

Synonyms LRRRC8A; leucine rich repeat containing 8 VRAC subunit A; AGM5; LRRRC8; SWELL1; volume-regulated anion channel subunit LRRRC8A; leucine rich repeat containing 8 family member A; leucine-rich repeat-containing protein 8A; swelling protein 1

 Tel: 1-631-559-9269 1-516-512-3133

 Email: info@creative-biomart.com  Fax: 1-631-938-8127

 45-1 Ramsey Road, Shirley, NY 11967, USA

Gene ID 56262

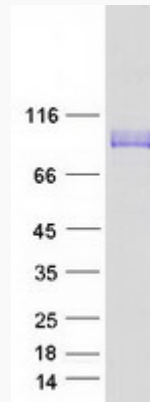
mRNA Refseq NM_001127244

Protein Refseq NP_001120716

MIM 608360

UniProt ID Q8IWT6

SDS-PAGE



 Tel: 1-631-559-9269 1-516-512-3133

 Email: info@creative-biomart.com  Fax: 1-631-938-8127

 45-1 Ramsey Road, Shirley, NY 11967, USA