

Recombinant Human LRRC8C Protein, Myc/DDK-tagged, C13 and N15-labeled

Cat. No. LRRC8C-2672H **Lot. No.** (See product label)

SPECIFICATION

Product Overview	LRRC8C MS Standard C13 and N15-labeled recombinant protein (NP_115646) with a C-terminal MYC/DDK tag, was expressed in HEK293 cells.
Species	Human
Source	HEK293
Description	Non-essential component of the volume-regulated anion channel (VRAC, also named VSOAC channel), an anion channel required to maintain a constant cell volume in response to extracellular or intracellular osmotic changes. The VRAC channel conducts iodide better than chloride and can also conduct organic osmolytes like taurine. Plays a redundant role in the efflux of amino acids, such as aspartate and glutamate, in response to osmotic stress. Channel activity requires LRRC8A plus at least one other family member (LRRC8B, LRRC8C, LRRC8D or LRRC8E); channel characteristics depend on the precise subunit composition.
Molecular Mass	92.4 kDa
AA Sequence	MIPVTEFRQFSEQQPAFRVLKPWWVDVFTDYL SVAMLMIGVFGCTLQVMQDKIICLPK RVQPAQNHSSLSNVSQAVASTTPLPPPKPSPANPITVEMKGLKTDLDLQQYSFINQM CYERALHWYAKYFPYLVIHTLVFMLCSNFWKFPGSSSKIEHFISILGKCFDSPWTT RALSEVSGEDSEEKDNRKNNMNRSNTIQSGPEGLVNSQSLKSIPEKFVVDKSTAG ALDKKEGEQAKALFEKVKKFRLHVEEGDILYAMYVRQTVLKVIFLIIIIAYNSALVSKV

 Tel: 1-631-559-9269 1-516-512-3133

 Email: info@creative-biomart.com  Fax: 1-631-938-8127

 45-1 Ramsey Road, Shirley, NY 11967, USA

QFTVDCNVDIQDMTGYKNFSCNHTMAHLFSKLSFCYLCFVSIYGLTCLYTLYWLFYR
 SLREYSFEYVRQETGIDDIPDVKNDFAFMLHMIDQYDPLYSKRFAVFLSEVSENKLL
 QLNLNNEWTPDKLRQKLQTNNAHRLELPLIMLSGLPDTVFEITELQSLKLEIKNVMIP
 ATIAQLDNLQELSLHQCSVKIHSAAALSFLKENLKVLSVKFDDMRELPPWMYGLRNLE
 ELYLVGSLSHDISRNVTLLESLRDLKSLKILSIKSNVSKIPQAVVDVSSHQKMCIHNDG
 TKLVMLNLLKMTNLTELELVHCDLERIPHAVFSLLSLQELDLKENNLSIEEIVSFQH
 LRKLTVLKLWHNSITYIPEHIKLTSLERLSFSHNKIEVLP SHLFLCNKIRYLDLSYNDIR
 FIPPEIGVLQSLQYFSITCNKVESLPDELYFCKKLTCLKIGKNSLSVLSPKIGNLLFLSYL
 DVKGNHFEILPPELGDCRALKRAGLVVEDALFETLPSDVREQMKTETRTRPLEQKLI
 SEEDLAANDILDYKDDDDKV

Purity > 80% as determined by SDS-PAGE and Coomassie blue staining

Stability Stable for 3 months from receipt of products under proper storage and handling conditions.

Storage Store at -80 centigrade. Avoid repeated freeze-thaw cycles.

Concentration 50 µg/mL as determined by BCA

Storage Buffer 100 mM glycine, 25 mM Tris-HCl, pH 7.3.

GENE INFORMATION

Gene Name [LRRRC8 leucine rich repeat containing 8 VRAC subunit C \[Homo sapiens \(human\) \]](#)

Official Symbol [LRRRC8C](#)

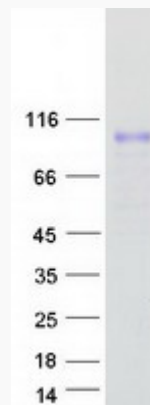
Synonyms LRRRC8C; leucine rich repeat containing 8 family, member C; AD158; FAD158; volume-regulated anion channel subunit LRRRC8C; factor for adipocyte differentiation 158; hypothetical protein AD158; leucine rich repeat containing 8 family member C;

 Tel: 1-631-559-9269 1-516-512-3133

 Email: info@creative-biomart.com  Fax: 1-631-938-8127

 45-1 Ramsey Road, Shirley, NY 11967, USA

leucine rich repeat containing 8C; leucine-rich repeat-containing protein 8C

Gene ID 84230**mRNA Refseq** NM_032270**Protein Refseq** NP_115646**MIM** 612889**UniProt ID** Q8TDW0**SDS-PAGE** Tel: 1-631-559-9269 1-516-512-3133 Email: info@creative-biomart.com  Fax: 1-631-938-8127 45-1 Ramsey Road, Shirley, NY 11967, USA