

Recombinant Human LRRC8D Protein, Myc/DDK-tagged, C13 and N15-labeled

Cat. No. LRRC8D-3328H **Lot. No.** (See product label)

SPECIFICATION

Product Overview	LRRC8D MS Standard C13 and N15-labeled recombinant protein (NP_001127951) with a C-terminal MYC/DDK tag, was expressed in HEK293 cells.
Species	Human
Source	HEK293
Description	Non-essential component of the volume-regulated anion channel (VRAC, also named VSOAC channel), an anion channel required to maintain a constant cell volume in response to extracellular or intracellular osmotic changes. The VRAC channel conducts iodide better than chloride and can also conduct organic osmolytes like taurine. Plays a redundant role in the efflux of amino acids, such as aspartate, in response to osmotic stress. Channel activity requires LRRC8A plus at least one other family member (LRRC8B, LRRC8C, LRRC8D or LRRC8E); channel characteristics depend on the precise subunit composition. LRRC8A and LRRC8D are required for the uptake of the drug cisplatin. Mediates the import of the antibiotic blasticidin-S into the cell.
Molecular Mass	98.2 kDa
AA Sequence	MFTLAEVASLNDIQPTYRILKPWWDFMDYLAVVMLMVAIFAGTMQLTKDQVVCLPV LPSPVNSKAHTPPGNAEVTTNIPKMEAATNQDQDGRRTNDISFGTSAVTPDIPLRAT YPRTFALPNQEAKKEKKDPTGRKTNLDFQQYVFINQMICYHLALPWYSKYFPYLALI

 Tel: 1-631-559-9269 1-516-512-3133

 Email: info@creative-biomart.com  Fax: 1-631-938-8127

 45-1 Ramsey Road, Shirley, NY 11967, USA

HTIILMVSSNFWFKYPKTCSKVEHFVSILGKCFESPWTTKALSETACEDSEENKQRIT
 GAQTLPKHVSTSSDEGSPSASTPMINKTGFKFSAEKPVIEVPSMTILDKKDGEQAKA
 LFEKVRKFRAHVEDSDLIYKLYVVQTVIKTAKFIFILCYTANFVNAISFEHVCKPKVEHLI
 GYEVFECTHNMAYMLKLLISYISIIICVYGFICLYTLFWLFRIPLKEYSFEKVREESSFS
 DIPDVKNDFALLHMVDQYDQLYSKRFGVFLSEVSENKLEISLNHEWTFEKLQRHI
 SRNAQDKQELHLFMLSGVPDAVFDLTDLDVLKLELIPEAKIPAKISQMTNLQELHLCH
 CPAKVEQTAFSFLRDHLRCLHVKFTDVAEIPAWVYLLKNLRELYLIGNLNSENKMMIG
 LESLRELRLKILHVKSNTKVPSNITDVAPHLTKLVIHNDGTKLLVLNSLKKMMNVAE
 LELQNCCELERIPHAIFSLSNLQELDLKSNNIRTIEEISFQHLKRLTCLKLWHNKIVTIPP
 SITHVKNLESLYFSNNKLESPLVAVFSLQKLRCLDVSYNNISMIPIEIGLLQNLQHLHIT
 GNKVDILPKQLFKCIKRLTLNLGQNCITSLPEKVGQLSQLTQLELKGNCCLDRLPAQLG
 QCRMLKKSGLVVEDHLFDTLPLEVKEALNQDINIPFANGITRTRPLEQKLISEEDLAAN
 DILDYKDDDDKV

Purity > 80% as determined by SDS-PAGE and Coomassie blue staining

Stability Stable for 3 months from receipt of products under proper storage and handling conditions.

Storage Store at -80 centigrade. Avoid repeated freeze-thaw cycles.

Concentration 50 µg/mL as determined by BCA

Storage Buffer 100 mM glycine, 25 mM Tris-HCl, pH 7.3.

GENE INFORMATION

Gene Name LRR8D leucine rich repeat containing 8 VRAC subunit D [Homo sapiens (human)]

Official Symbol LRR8D

 Tel: 1-631-559-9269 1-516-512-3133

 Email: info@creative-biomart.com  Fax: 1-631-938-8127

 45-1 Ramsey Road, Shirley, NY 11967, USA

Synonyms LRRC8D; leucine rich repeat containing 8 family, member D; leucine rich repeat containing 5, LRRC5; leucine-rich repeat-containing protein 8D; FLJ10470; leucine rich repeat containing 5; leucine-rich repeat-containing 5; leucine-rich repeat-containing protein 5; LRRC5; FLJ20403;

Gene ID [55144](#)

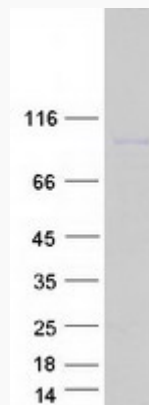
mRNA Refseq [NM_001134479](#)

Protein Refseq [NP_001127951](#)

MIM [612890](#)

UniProt ID [Q7L1W4](#)

SDS-PAGE



 Tel: 1-631-559-9269 1-516-512-3133

 Email: info@creative-biomart.com  Fax: 1-631-938-8127

 45-1 Ramsey Road, Shirley, NY 11967, USA