

## Recombinant Human LRRC8D Protein, GST-tagged

**Cat. No.** LRRC8D-4655H    **Lot. No.** (See product label)

### SPECIFICATION

<b>Product Overview</b>	Human LRRC5 full-length ORF ( AAH09486, 1 a.a. - 143 a.a.) recombinant protein with GST-tag at N-terminal.
<b>Species</b>	Human
<b>Source</b>	Wheat Germ
<b>Description</b>	LRRC8D (Leucine Rich Repeat Containing 8 Family Member D) is a Protein Coding gene. An important paralog of this gene is LRRC8A.
<b>Molecular Mass</b>	41.47 kDa
<b>AA Sequence</b>	MVSSNFWFKYPKTCVKVEHFVSILGKCFESPWTTKALSETACEDSEENKQRITGAQ TLPKHVSTSSDEGSPSASTPMINKTGFKFSAEKPVIEVPSMTILDKKDGEQAKALFEK VRKFRAHVEDSDLIYKLYVVQTASPPFNQ
<b>Applications</b>	Enzyme-linked Immunoabsorbent Assay Western Blot (Recombinant protein) Antibody Production Protein Array
<b>Notes</b>	Best use within three months from the date of receipt of this protein.
<b>Storage</b>	Store at -80 centigrade. Aliquot to avoid repeated freezing and thawing.

 Tel: 1-631-559-9269    1-516-512-3133

 Email: [info@creative-biomart.com](mailto:info@creative-biomart.com)     Fax: 1-631-938-8127

 45-1 Ramsey Road, Shirley, NY 11967, USA

**Storage Buffer** 50 mM Tris-HCl, 10 mM reduced Glutathione, pH=8.0 in the elution buffer.

## GENE INFORMATION

**Gene Name** [LRRC8D leucine rich repeat containing 8 family, member D \[ Homo sapiens \]](#)

**Official Symbol** [LRRC8D](#)

**Synonyms** LRRC8D; leucine rich repeat containing 8 family, member D; leucine rich repeat containing 5 , LRRC5; leucine-rich repeat-containing protein 8D; FLJ10470; leucine rich repeat containing 5; leucine-rich repeat-containing 5; leucine-rich repeat-containing protein 5; LRRC5; FLJ20403;

**Gene ID** [55144](#)

**mRNA Refseq** [NM\\_001134479](#)

**Protein Refseq** [NP\\_001127951](#)

**MIM** [612890](#)

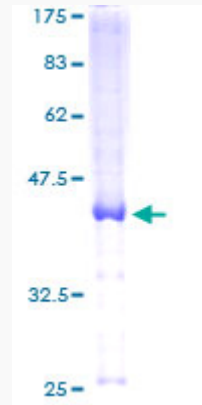
**UniProt ID** [Q7L1W4](#)

 Tel: 1-631-559-9269 1-516-512-3133

 Email: [info@creative-biomart.com](mailto:info@creative-biomart.com)  Fax: 1-631-938-8127

 45-1 Ramsey Road, Shirley, NY 11967, USA

**Quality Control  
Testing**



12.5% SDS-PAGE Stained with Coomassie Blue

 Tel: 1-631-559-9269 1-516-512-3133

 Email: [info@creative-biomart.com](mailto:info@creative-biomart.com)  Fax: 1-631-938-8127

 45-1 Ramsey Road, Shirley, NY 11967, USA