

Recombinant Human LRRC8E Protein, GST-tagged

Cat. No. LRRC8E-4644H Lot. No. (See product label)

SPECIFICATION

Product Overview	Human LRRC8E full-length ORF (AAH70089.1, 1 a.a. - 796 a.a.) recombinant protein with GST-tag at N-terminal.
Species	Human
Source	Wheat Germ
Description	This gene encodes a member of a small, conserved family of proteins with similar structure, including a string of extracellular leucine-rich repeats. A related protein was shown to be involved in B-cell development. Alternatively spliced transcript variants encoding multiple isoforms have been observed for this gene. [provided by RefSeq, Jun 2012]
Molecular Mass	116.7 kDa
AA Sequence	MIPVAEFKQFTEQQPAFKVLKPWWVDVLAEYLTVAMLMIGVFGCTLQVTQDKIICLPN HELQENLSEAPCQQLPRGIPEQIGALQEVKGLKNNLDLQQYSFINQLCYETALHWY TKYFPYLVIHTLIFMVCTSFWFKFPGTSSKIEHFISILGKCFDSPWTRALSEVSGEN QKGAATERAAATIVAMAGTGPGKAGEGEKEKVLAEPEKVVTEPPVVTTLLDKKEGE QAKALFEKVKKFRMHVEEGDILYTM YIRQTVLKVCKFLAILVYNLVYVEKISFLVACRV ETSEVTGYASFCCNHTKAHLFSKLAFICYISFVCIYGLTTCIYTLYWL FHRPLKEYSFRSV REETGMGDIPDVKNDFAFMLHLIDQYDSL YSKRFAVFLSEVSESRLKQLNLNHEWTP EKLRQKLQRNAAGRLELALCMLPGLPDTVFELSEVESLRLEAICDITFPPGLSQLVHL QELSLHSPARLPFSLQVFLRDHLKVMRVKCEELREVPLWVFGLRGLEELHLEGLFP

 Tel: 1-631-559-9269 1-516-512-3133

 Email: info@creative-biomart.com  Fax: 1-631-938-8127

 45-1 Ramsey Road, Shirley, NY 11967, USA

QELARAATLESLRELKQLKVLSLRSNAGKVPASVTDVAGHLQRLSLHNDGARLVALN
 SLKKLAALRELELVACGLERIPHAVFSLGALQELDLKDNHLRSIEEILSFQHCRKLVTL
 RLWHNQIAYVPEHVRKLRSLLEQLYLSYNKLETLPSQLGLCSGLRLLDVSHNGLHSLP
 PEVGLLQNLQHLALSYNALALPEELFFCRKLRLLLLGDNQLSQLSPHVGALRALSRSL
 ELKGNRLEALPEELGNCGGLKKAGLLVEDTLYQGLPAEVRDKMEEE

Applications
 Enzyme-linked Immunoabsorbent Assay
 Western Blot (Recombinant protein)
 Antibody Production
 Protein Array

Notes
 Best use within three months from the date of receipt of this protein.

Storage
 Store at -80 centigrade. Aliquot to avoid repeated freezing and thawing.

Storage Buffer
 50 mM Tris-HCl, 10 mM reduced Glutathione, pH=8.0 in the elution buffer.

GENE INFORMATION

Gene Name
 LRR8E leucine rich repeat containing 8 family, member E [Homo sapiens]

Official Symbol
 LRR8E

Synonyms
 LRR8E; leucine rich repeat containing 8 family, member E; leucine-rich repeat-containing protein 8E; FLJ23420;

Gene ID
 80131

mRNA Refseq
 NM_025061

Protein Refseq
 NP_079337

 Tel: 1-631-559-9269 1-516-512-3133

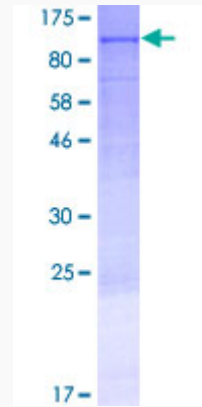
 Email: info@creative-biomart.com  Fax: 1-631-938-8127

 45-1 Ramsey Road, Shirley, NY 11967, USA

MIM 612891

UniProt ID Q6NSJ5

**Quality Control
Testing**



12.5% SDS-PAGE Stained with Coomassie Blue

 Tel: 1-631-559-9269 1-516-512-3133

 Email: info@creative-biomart.com  Fax: 1-631-938-8127

 45-1 Ramsey Road, Shirley, NY 11967, USA