

Recombinant Human LRRFIP1 Protein, GST-tagged

Cat. No. LRRFIP1-4643H **Lot. No.** (See product label)

SPECIFICATION

Product Overview	Human LRRFIP1 full-length ORF (AAH10662, 1 a.a. - 105 a.a.) recombinant protein with GST-tag at N-terminal.
Species	Human
Source	Wheat Germ
Description	LRRFIP1 (LRR Binding FLII Interacting Protein 1) is a Protein Coding gene. Diseases associated with LRRFIP1 include Gingival Recession. Among its related pathways are Innate Immune System and FGFR1 mutant receptor activation. GO annotations related to this gene include protein homodimerization activity and double-stranded RNA binding. An important paralog of this gene is LRRFIP2.
Molecular Mass	37.29 kDa
AA Sequence	MHVMDLQRDANRQISDLKFKLAKSEQEITALEQNVIRLESQVSRYSAAENAIEDE LKAEKRKLQRELRSDKTEELEVSNGHLVVKRLEKMKANRSALLSQQ
Applications	Enzyme-linked Immunoabsorbent Assay Western Blot (Recombinant protein) Antibody Production Protein Array
Notes	Best use within three months from the date of receipt of this protein.

 Tel: 1-631-559-9269 1-516-512-3133

 Email: info@creative-biomart.com  Fax: 1-631-938-8127

 45-1 Ramsey Road, Shirley, NY 11967, USA

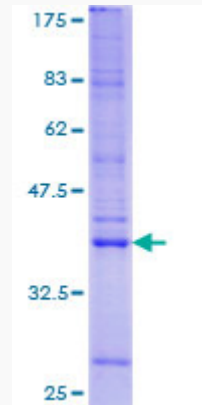
Storage	Store at -80 centigrade. Aliquot to avoid repeated freezing and thawing.
Storage Buffer	50 mM Tris-HCl, 10 mM reduced Glutathione, pH=8.0 in the elution buffer.
GENE INFORMATION	
Gene Name	LRRFIP1 leucine rich repeat (in FLII) interacting protein 1 [Homo sapiens]
Official Symbol	LRRFIP1
Synonyms	LRRFIP1; leucine rich repeat (in FLII) interacting protein 1; leucine-rich repeat flightless-interacting protein 1; FLAP 1; FLIIAP1; GC binding factor 2; GCF 2; HUF1 1; TRIP; GC-binding factor 2; NEDD8-conjugating enzyme; TAR RNA-interacting protein; LRR FLII-interacting protein 1; GCF2; FLAP1; GCF-2; FLAP-1; HUF1-1; MGC10947; MGC119738; MGC119739;
Gene ID	9208
mRNA Refseq	NM_001137550
Protein Refseq	NP_001131022
MIM	603256
UniProt ID	Q32MZ4

 Tel: 1-631-559-9269 1-516-512-3133

 Email: info@creative-biomart.com  Fax: 1-631-938-8127

 45-1 Ramsey Road, Shirley, NY 11967, USA

**Quality Control
Testing**



12.5% SDS-PAGE Stained with Coomassie Blue

 Tel: 1-631-559-9269 1-516-512-3133

 Email: info@creative-biomart.com  Fax: 1-631-938-8127

 45-1 Ramsey Road, Shirley, NY 11967, USA