

# Recombinant Human LRRFIP1 Protein, Myc/DDK-tagged, C13 and N15-labeled

Cat. No. LRRFIP1-4984H Lot. No. (See product label)

## SPECIFICATION

<b>Product Overview</b>	LRRFIP1 MS Standard C13 and N15-labeled recombinant protein (NP_004726) with a C-terminal MYC/DDK tag, was expressed in HEK293 cells.
<b>Species</b>	Human
<b>Source</b>	HEK293
<b>Description</b>	LRRFIP1 (LRR Binding FLII Interacting Protein 1) is a Protein Coding gene. Diseases associated with LRRFIP1 include Marasmus. Among its related pathways are Innate Immune System and Signaling by FGFR2 in disease. Gene Ontology (GO) annotations related to this gene include protein homodimerization activity and double-stranded RNA binding. An important paralog of this gene is LRRFIP2.
<b>Molecular Mass</b>	86.2 kDa
<b>AA Sequence</b>	MTSPAAAQSREIDCLSPEAQKLAEARLAAKRAARAEAREIRMKELERQQKEEDSER YSRRSRNTSASDEDERMSVGSRGLRVEERPEKDFTEKGSRNMPGLSAATLASL GGTSSRRGSGDTSISIDTEASIREIKDSLAEVEEKYKKAMVSNALDNEKTNFMYQV DTLKDMLLELEEQLAESRRQYEEKNKEFEREKHAHSILQFQFAEVKEALKQREEMLE KHGIILNSEIATNGETSDTLNNVGYQGPTKMTKEELNALKSTGDGTLGRASEVEVK EIVANVGKREILHNTEKEQHTEDTVKDCVDIEVFPAGENTEDQKSSSEDAPFLGTLA GATYEEQVQSQILESSLPENTVQVESNEVMGAPDDRTRTPLEPSNCWSDLDGGN HTENVGEAAVTQVEEQAGTVASCPLGHSDDTVYHDDKCMVEVPQELETSTGHSLE

 Tel: 1-631-559-9269 1-516-512-3133

 Email: [info@creative-biomart.com](mailto:info@creative-biomart.com)  Fax: 1-631-938-8127

 45-1 Ramsey Road, Shirley, NY 11967, USA

KEFTNQEAAEPKEVPAHSTEVGRDHNEEEGEETGLRDEKPIKTEVPGSPAGTEGNC  
 QEATGPSTVDTQNEPLDMKEPDEEEKSDQQGEALDSSQKKTKNKKKKKSPVP  
 VETLKDVKKELTYQNTDLSEIKEEEQVKSTDRKSAVEAQNEVTENPKQKIAAESSEN  
 VDCPENPKIKLDGKLDQEGDDVQTAAEEVLADGDTLDFEDDTVQSSGPRAGGEELD  
 EGVAKDNAKIDGATQSSPAEPKSEADRCTLPEHESPSQDISDACEAESTERCEMS  
 EHPSQTVRKALDSNSLENDDLAPGREPGHFNPESREDTRGGNEKGKSKEDCTMS  
 TRTRPLEQKLISEEDLAANDILDYKDDDDKV

**Purity** > 80% as determined by SDS-PAGE and Coomassie blue staining

**Stability** Stable for 3 months from receipt of products under proper storage and handling conditions.

**Storage** Store at -80 centigrade. Avoid repeated freeze-thaw cycles.

**Concentration** 50 µg/mL as determined by BCA

**Storage Buffer** 100 mM glycine, 25 mM Tris-HCl, pH 7.3.

## GENE INFORMATION

**Gene Name** LRRFIP1 LRR binding FLII interacting protein 1 [ Homo sapiens (human) ]

**Official Symbol** LRRFIP1

**Synonyms** LRRFIP1; leucine rich repeat (in FLII) interacting protein 1; leucine-rich repeat flightless-interacting protein 1; FLAP 1; FLIIAP1; GC binding factor 2; GCF 2; HUF1 1; TRIP; GC-binding factor 2; NEDD8-conjugating enzyme; TAR RNA-interacting protein; LRR FLII-interacting protein 1; GCF2; FLAP1; GCF-2; FLAP-1; HUF1-1; MGC10947; MGC119738; MGC119739;

 Tel: 1-631-559-9269 1-516-512-3133

 Email: [info@creative-biomart.com](mailto:info@creative-biomart.com)  Fax: 1-631-938-8127

 45-1 Ramsey Road, Shirley, NY 11967, USA

Gene ID 9208

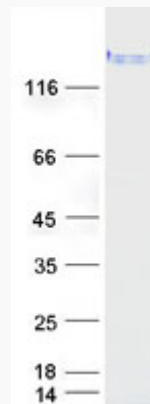
mRNA Refseq NM\_004735

Protein Refseq NP\_004726

MIM 603256

UniProt ID Q32MZ4

SDS-PAGE



Tel: 1-631-559-9269 1-516-512-3133

Email: [info@creative-biomart.com](mailto:info@creative-biomart.com) Fax: 1-631-938-8127

45-1 Ramsey Road, Shirley, NY 11967, USA