

Recombinant Human LRRFIP1 Protein (1-314 aa), His-tagged

Cat. No. LRRFIP1-634H **Lot. No.** (See product label)

SPECIFICATION

Product Overview	Recombinant Human LRRFIP1 Protein (1-314 aa) is produced by E. coli expression system. This protein is fused with a 6xHis tag at the N-terminal. Research Area: Transcription. Protein Description: Partial.
Species	Human
Source	E.coli
ProteinLength	1-314 aa
Description	Transcriptional repressor which preferentially binds to the GC-rich consensus sequence (5'-AGCCCCCGGCG-3') and may regulate expression of TNF, EGFR and PDGFA. May control smooth muscle cells proliferation following artery injury through PDGFA repression. May also bind double-stranded RNA. Positively regulates Toll-like receptor (TLR) signaling in response to agonist probably by competing with the negative FLII regulator for MYD88-binding.
Form	Tris-based buffer, 50% glycerol
Molecular Mass	40.1 kDa
AA Sequence	MTSPAAAQSREIDCLSPEAQKLAEARLAAKRAARAEAREIRMKELERQQKEVEERP EKDFTEKGSRNMPGLSAATLASLGGTSSRRGSGDTSISIDTEASIREIKDSLAEVEEK YKKAMVSNAQLDNEKTNFMYQVDTLKDMLLEEQLAESRRQYEEKNKEFEREKHA HSILQFQFAEVKEALKQREEMLEKHGILNSEIATNGETSDTLNNVGYQGPTKMTKEE

 Tel: 1-631-559-9269 1-516-512-3133

 Email: info@creative-biomart.com  Fax: 1-631-938-8127

 45-1 Ramsey Road, Shirley, NY 11967, USA

LNALKSTGDGTLGRASEVEVKNEIVANVGKREILHNTEKEQHTEDTVKDCVDIEVFPA
GENTEDQKSSSEDAPFLGTLGATYEEQSLSTCSLDR

Purity > 90% as determined by SDS-PAGE.

Notes Repeated freezing and thawing is not recommended. Store working aliquots at 4 centigrade for up to one week.

Storage The shelf life is related to many factors, storage state, buffer ingredients, storage temperature and the stability of the protein itself. Generally, the shelf life of liquid form is 6 months at -20 centigrade/-80 centigrade. The shelf life of lyophilized form is 12 months at -20 centigrade/-80 centigrade.

Concentration A hardcopy of COA with concentration instruction is sent along with the products.

GENE INFORMATION

Gene Name [LRRFIP1 leucine rich repeat \(in FLII\) interacting protein 1 \[Homo sapiens \]](#)

Official Symbol [LRRFIP1](#)

Synonyms LRRFIP1; FLAP 1; FLIAP1; GCF 2; HUF1 1; TRIP; GCF2; FLAP1; GCF-2; FLAP-1; HUF1-1; MGC10947; MGC119738; MGC119739;

Gene ID [9208](#)

mRNA Refseq [NM_001137550](#)

Protein Refseq [NP_001131022](#)

MIM [603256](#)

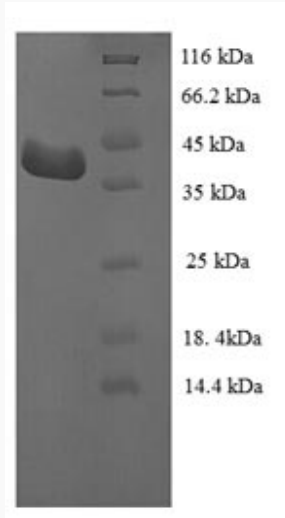
 Tel: 1-631-559-9269 1-516-512-3133

 Email: info@creative-biomart.com  Fax: 1-631-938-8127

 45-1 Ramsey Road, Shirley, NY 11967, USA

UniProt ID

Q32MZ4



(Tris-Glycine gel) Discontinuous SDS-PAGE (reduced) with 5% enrichment gel and 15% separation gel.

 Tel: 1-631-559-9269 1-516-512-3133

 Email: info@creative-biomart.com  Fax: 1-631-938-8127

 45-1 Ramsey Road, Shirley, NY 11967, USA