

Recombinant Human LRRFIP1 protein, GST-tagged

Cat. No. LRRFIP1-646H **Lot. No.** (See product label)

SPECIFICATION

Product Overview	Recombinant Human LRRFIP1 protein(1-105 aa), fused with N-terminal GST tag, was expressed in E.coli.
Species	Human
Source	E.coli
ProteinLength	1-105 aa
Form	The purified protein was lyophilized from sterile phosphate-buffered saline (PBS: 58 mM Na ₂ HPO ₄ , 17 mM NaH ₂ PO ₄ , 68 mM NaCl, pH 8.0). Prior to lyophilization, 5% (w/v) trehalose and 5% (w/v) mannitol were incorporated as cryoprotective excipients. The protein was eluted with a buffer containing 100 mM reduced glutathione (GSH).
AASequence	MHVMDLQRDANRQISDLKFKLAKSEQEITALEQNVIRLESQVSRYSAAENAIEDE LKAEKRLQRELRSALDKTEELEVSNGHLVKRLEKMKANRSALLSQQ
Purity	90%, by SDS-PAGE with Coomassie Brilliant Blue staining.
Storage	Store at 2-8°C for 1-2 weeks. Aliquot and store at -20°C to -80°C for up to 3 months, reconstitution with sterile water and addition of an equal volume of glycerol. Avoid repeat freeze-thaw cycles.
Reconstitution	Dissolve the product in 200

 Tel: 1-631-559-9269 1-516-512-3133

 Email: info@creative-biomart.com  Fax: 1-631-938-8127

 45-1 Ramsey Road, Shirley, NY 11967, USA

µl sterile water to achieve a working concentration of 0.25 g/µl. If experimental compatibility allows, mix the aqueous solution with an equal volume of glycerol (1:1 ratio) after initial reconstitution.

GENE INFORMATION

Gene Name [LRRFIP1 leucine rich repeat \(in FLII\) interacting protein 1 \[Homo sapiens \]](#)

Official Symbol [LRRFIP1](#)

Synonyms LRRFIP1; leucine rich repeat (in FLII) interacting protein 1; leucine-rich repeat flightless-interacting protein 1; FLAP 1; FLIIAP1; GC binding factor 2; GCF 2; HUF1 1; TRIP; GC-binding factor 2; NEDD8-conjugating enzyme; TAR RNA-interacting protein; LRR FLII-interacting protein 1; GCF2; FLAP1; GCF-2; FLAP-1; HUF1-1; MGC10947; MGC119738; MGC119739;

Gene ID [9208](#)

mRNA Refseq [NM_001137550](#)

Protein Refseq [NP_001131022](#)

MIM [603256](#)

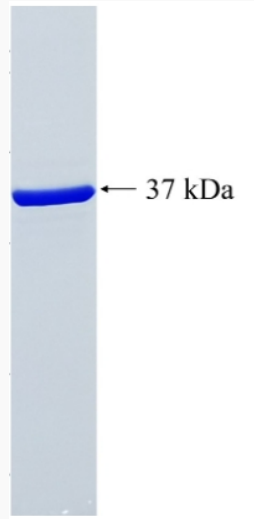
UniProt ID [Q32MZ4](#)

 Tel: 1-631-559-9269 1-516-512-3133

 Email: info@creative-biomart.com  Fax: 1-631-938-8127

 45-1 Ramsey Road, Shirley, NY 11967, USA

SDS-PAGE



 Tel: 1-631-559-9269 1-516-512-3133

 Email: info@creative-biomart.com  Fax: 1-631-938-8127

 45-1 Ramsey Road, Shirley, NY 11967, USA