

Recombinant Human LRRFIP2 Protein, GST-tagged

Cat. No. LRRFIP2-4641H Lot. No. (See product label)

SPECIFICATION

Product Overview	Human LRRFIP2 full-length ORF (NP_060194.1, 1 a.a. - 400 a.a.) recombinant protein with GST-tag at N-terminal.
Species	Human
Source	Wheat Germ
Description	The protein encoded by this gene, along with MYD88, binds to the cytosolic tail of toll-like receptor 4 (TLR4), which results in activation of nuclear factor kappa B signaling. The ubiquitin-like protein FAT10 prevents the interaction of the encoded protein and TLR4, thereby inactivating the nuclear factor kappa B signaling pathway. In addition, this protein can downregulate the NLRP3 inflammasome by recruiting the caspase-1 inhibitor Flightless-I to the inflammasome complex. [provided by RefSeq, Jan 2017]
Molecular Mass	71.8 kDa
AA Sequence	<p>MGTPASGRKRTPVKDRFSAEDEALSNIAREAEARLAAKRAARAEARDIRMRELERQ QKELDEKSDKQYAENYTRPSSRNSASATTPLSGNSSRRGSGDTSSLIDPDTLSSEL RESLSEVEEKYKKAMVSNAQLDNEKNLIYQVDTLKDVIEEQEEQMAEFYRENEEKS KELERQKHMCSVLQHKMEELKEGLRQRDELIEKHGLVIIPDGTPNGDVSHEPVAGAI TVVSQEAQVLESAGEGPLDVRRLRKLAGEKEELLSQIRKLLQLEEERQKCSRNDGT VGDLAGLQNGSDLQFIEMQRDANRQISEYKFKLSKAEQDITTLEQSSIRLEGQVRLRY KTAAENAEEKVEDELKAEKRKLQRELRTALDKIEEMEMTNSHLAKRLEKMKANRTALL AQQ</p>

 Tel: 1-631-559-9269 1-516-512-3133

 Email: info@creative-biomart.com  Fax: 1-631-938-8127

 45-1 Ramsey Road, Shirley, NY 11967, USA

Applications	Enzyme-linked Immunoabsorbent Assay Western Blot (Recombinant protein) Antibody Production Protein Array
Notes	Best use within three months from the date of receipt of this protein.
Storage	Store at -80 centigrade. Aliquot to avoid repeated freezing and thawing.
Storage Buffer	50 mM Tris-HCl, 10 mM reduced Glutathione, pH=8.0 in the elution buffer.

GENE INFORMATION

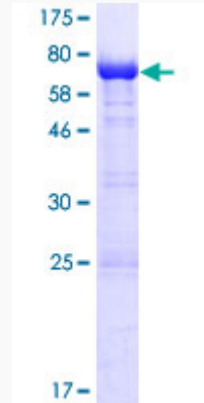
Gene Name	LRRFIP2 leucine rich repeat (in FLII) interacting protein 2 [Homo sapiens]
Official Symbol	LRRFIP2
Synonyms	LRRFIP2; leucine rich repeat (in FLII) interacting protein 2; leucine-rich repeat flightless-interacting protein 2; HUF1 2; LRR FLII-interacting protein 2; HUF1-2; FLJ20248; FLJ22683; FLJ58304; DKFZp434H2035;
Gene ID	9209
mRNA Refseq	NM_001134369
Protein Refseq	NP_001127841
MIM	614043
UniProt ID	Q9Y608

 Tel: 1-631-559-9269 1-516-512-3133

 Email: info@creative-biomart.com  Fax: 1-631-938-8127

 45-1 Ramsey Road, Shirley, NY 11967, USA

**Quality Control
Testing**



12.5% SDS-PAGE Stained with Coomassie Blue

 Tel: 1-631-559-9269 1-516-512-3133

 Email: info@creative-biomart.com  Fax: 1-631-938-8127

 45-1 Ramsey Road, Shirley, NY 11967, USA