

Recombinant Human LRRIQ3 Protein, GST-tagged

Cat. No. LRRIQ3-4663H **Lot. No.** (See product label)

SPECIFICATION

Product Overview	Human LRRC44 full-length ORF (NP_660301.1, 1 a.a. - 199 a.a.) recombinant protein with GST-tag at N-terminal.
Species	Human
Source	Wheat Germ
Description	LRRIQ3 (Leucine Rich Repeats And IQ Motif Containing 3) is a Protein Coding gene.
Molecular Mass	49.6 kDa
AA Sequence	MFHGTVTEELTSHEEWSHYNENIREGQKDFVFKFNGLHLKSMENLQSCISLRVCIF SNNFITDIHPLQSCIKLIKLDLHGNQIKSLPNTKFWNGLKLNKLLYLHDNGFAKLNKICV LSACPTLIALTMFDCPVSLKKGYRHVLVNSIWPLKALDHHVISDEEIIQNWHLPERFKA CNHRLFFNFCPALRKEKMKHSEV
Applications	Enzyme-linked Immunoabsorbent Assay Western Blot (Recombinant protein) Antibody Production Protein Array
Notes	Best use within three months from the date of receipt of this protein.
Storage	Store at -80 centigrade. Aliquot to avoid repeated freezing and thawing.

 Tel: 1-631-559-9269 1-516-512-3133

 Email: info@creative-biomart.com  Fax: 1-631-938-8127

 45-1 Ramsey Road, Shirley, NY 11967, USA

Storage Buffer 50 mM Tris-HCl, 10 mM reduced Glutathione, pH=8.0 in the elution buffer.

GENE INFORMATION

Gene Name LRRIQ3 leucine rich repeats and IQ motif containing 3 [Homo sapiens (human)]

Official Symbol LRRIQ3

Synonyms LRRIQ3; leucine rich repeats and IQ motif containing 3; LRRC44; leucine-rich repeat and IQ domain-containing protein 3; leucine rich repeat containing 44; leucine-rich repeat-containing protein 44

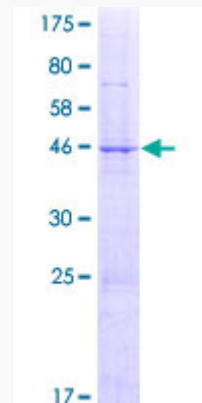
Gene ID 127255

mRNA Refseq NM_001105659

Protein Refseq NP_001099129

UniProt ID A6PVS8

Quality Control Testing



12.5% SDS-PAGE Stained with Coomassie Blue

 Tel: 1-631-559-9269 1-516-512-3133

 Email: info@creative-biomart.com  Fax: 1-631-938-8127

 45-1 Ramsey Road, Shirley, NY 11967, USA