

Active Recombinant Full Length Human LRRK2 Protein, G2019S mutant, Flag tagged

Cat. No. LRRK2-10HFL Lot. No. (See product label)

SPECIFICATION

Product Overview	Recombinant human, full length, G2019S mutant, DYKDDDDK-tagged, expressed in mammalian cells. No special measures were taken to activate this kinase.
Species	Human
Source	Mammalian Cells
ProteinLength	1-2527 aa
Description	This gene is a member of the leucine-rich repeat kinase family and encodes a protein with an ankryin repeat region, a leucine-rich repeat (LRR) domain, a kinase domain, a DFG-like motif, a RAS domain, a GTPase domain, a MLK-like domain, and a WD40 domain. The protein is present largely in the cytoplasm but also associates with the mitochondrial outer membrane. Mutations in this gene have been associated with Parkinson disease-8.
Form	50 mM Tris (pH 7.5), 150 mM NaCl, 0.5 mM EDTA, 0.02 % Triton X-100, 2 mM DTT and 50 % Glycerol.
Bio-activity	73 nmoles of phosphate transferred to ERM (LRRKtide) peptide substrate (RLGRDKYKTLRQIRQ) per minute per mg of total protein at 30 centigrade. Activity determined at a final protein concentration of 2.08 µg/mL.
AASequence	MDYKDDDDKITSLYKKAGTMASGSCQGCEEDEETLKKLIVRLNNVQEGKQIETLVQI

 Tel: 1-631-559-9269 1-516-512-3133

 Email: info@creative-biomart.com  Fax: 1-631-938-8127

 45-1 Ramsey Road, Shirley, NY 11967, USA



LEDLLVFTYSEHASKLFQGKNIHVPLLVLDVSYMRVASVQQVGSLLCKLIEVCPGTM
QSLMGPQDVGNDWEVLGVHQLILKMLTVHNASVNLVIGLKTLDLLTSGKITLLILDE
ESDIFMLIFDAMHSFPANDEVQKLGCKALHVLFRVSEEQLTEFVENKDYMILLSALT
NFKDEEEIVLHVLHCLHSLAIPCNNVEVLMMSGNVRCYNIVVEAMKAFPMSERIQEVSC
CLLHRLTLGNFFNILVLNEVHEFVVKAVQQYPENAALQISALSCLALLTETIFLNQDLE
EKNEQENDDEGEEDKLFWLEACYKALTWHRKNKHVQEACWALNLLMYQNSL
HEKIGDEDGHFPAHREVMLSMLMHSSSKEVFQASANALSTLLEQNVNFRKILLSKGI
HLNVLELMQKHIHSPEVAESGCKMLNHLFEQSNTSLDIMAAVVPKILTVMKRHETSLP
VQLEALRAILHFIVPGMPEESREDTEFHHLNMVKKQCFKNDIHKLVLAALNRFIGNP
GIQKCGLVKVISSIVHFPDALEMLSLEGAMDSVLHTLQMPDQEIQCLGLSLIGYLITK
KNVFIGTGHELLAKILVSSLYRFKDVAEIQTGKFQTLAILKLSASFKLLVHHSFDLVIFH
QMSSNIMEQKDQQFLNLCCKCFKAVMDDYLKNVMLERACDQNSSIMVECLLLLGA
DANQAKEGSSLICQVCEKESSPKLVELLNSGSREQDVRKALTISIGKGDSSQIISLLR
RLALDVANNISICLGGFCIGKVEPSWLGPLFPDKTSNLRKQTNIASTLARMVIRYQMK
AVEEGTASGSDGNFSEDVLSKFDEWTFIPDSSMDSVFAQSDDLSEGESEGSFLVKK
KSNSISVGEFYRDAVLQRCSPNLQRHSNSLGPFDHEDLLKRKRKILSSDDSLRSSKL
QSHMRHSDSISLASEREYITSLDLSANELRDIDALSQKCCISVHLEHLEKLELHQNAL
TSFPQQLCETLKSLTHLDLHSNKFTSFPSYLLKMSCIANLDVSRNDIGPSVVDPTVK
CPTLKQFNLSYNQLSFVPENLTDVVEKLEQLILEGNKISGICSPRLKELKILNLSKNHI
SSLSENFLEACPVESFSARMNFLAAMPFLPPSMTILKLSQNKFSCIPAILNPLHRS
LDMSSNDIQYLPGPAHWKSLNLRRELLFSHNQISILDSEKAYLWSRVEKLHLSHNK
EIPPEIGCLENLTSLDVSYNLELRSFPNEMGKLSKIWDPLDELHLNFDKFKHIGCKAKD
IIRFLQQLKKAOPYNRMKLMIVGNTGSGKTTLLQQLMKTKKSDLGMQSATVGIDVK
DWPIQIRDKRDLVLNVWDFAGREEFYSTPHFMTQRALYLAVYDLSKGQAEVDA
MKPWLFNIKARASSPVILVGTDLVSDKQRKACMSKITKELLNKRGFPAIRDYHFV
NATEESDALAKLRKTIINESLNFKIRDQLVVGQLIPDCYVELEKIILSERKNVPIEFPVID
RKRLQLVRENQLQLDENELPHAVHFLNESGVLLHFQDPALQLSDLYFVEPKWLCKI
MAQILTVKVEGCPKHPKGIISRRDVEKFLSKRKFPPKNYMSQYFKLLEKFQIALPIGEE
YLLVPSSLDHRPVIELPHCENSEIIIRLYEMPYFPMGFWSRLINRLLLEISPYMLSGRE
RALRPNRMYWRQGIYLNWSPEAYCLVGSEVLDNHPESFLKITVPSCRKGCILLGQV

Tel: 1-631-559-9269 1-516-512-3133

Email: info@creative-biomart.com Fax: 1-631-938-8127

45-1 Ramsey Road, Shirley, NY 11967, USA

VDHIDSLMEEWFPGLEIDICGEGETLLKKWALYSFNDGEEHQILLDDLMKKAEEG
 DLLVNPDPRLTIPISQIAPDLILADLPRNIMLNDELEFEQAPEFLLGDGSFGSVYRA
 AYEGEREAVKIFNKHTSLRLLRQELVVLCHLHHPISLISLLAAGIRPRMLVMELASKGS
 LDRLLQQDKASLRTLQHRIALHVADGLRYLHSAMIIYRDLKPHNVLLFTLYPNAIIAK
 IADYSIAQYCCRMGIKTSEGTPGFRAPEVARGNVIYNQQADVVSFGLLLYDILTTGGR
 IVEGLKFPNEFDELEIQGKLPDPVKEYGCAPWPMVEKLIKQCLKENPQERPTSAQVF
 DILNSAELVCLTRRILLPKNVIVECMVATHHNSRNASIWLGCGHTRGQLSFLDLNTE
 GYTSEEVADSRILCLALVHLPVEKESWIVSGTQSGTLLVINTEDGKKRHTLEKMTDSV
 TCLYCNSFSKQSKQKNFLLVGTADGKLAIFEDKTVKLKGAAPLKILNIGNVSTPLMCL
 SESTNSTERNVMWGGCGTKIFSFSNDFTIQKLIETRTSQLFSYAAFSDSNITVVVDTA
 LYIAKQNSPVVEVWDKKTEKLCGLIDCVHFLREVMVKENKESKHKMSYSGRVKTLCCL
 QKNTALWIGTGGGHILLDLSTRRLIRVIYNFCNSVRVMMTAQLGSLKNVMLVLGYN
 RKNTEGTQKQKEIQSCLTVWDINLPHEVQNLEKHIEVRKELAEKMRRTSVE

Purity 85 % as determined by a SDS-PAGE gel stained with SimplyBlue SafeStain.

Concentration 0.40 mg/mL total protein as measured using the Bradford protein assay with BSAs as a standard. Calculated: 1,390 nM.

Shipping Dry ice

GENE INFORMATION


Gene Name [LRRK2 leucine-rich repeat kinase 2 \[Homo sapiens \(human\) \]](#)

Official Symbol [LRRK2](#)

Synonyms LRRK2; leucine-rich repeat kinase 2; PARK8, Parkinson disease (autosomal dominant) 8; leucine-rich repeat serine/threonine-protein kinase 2; DKFZp434H2111; FLJ45829; RIPK7; ROCO2; augmented in rheumatoid arthritis 17; PARK8; AURA17;

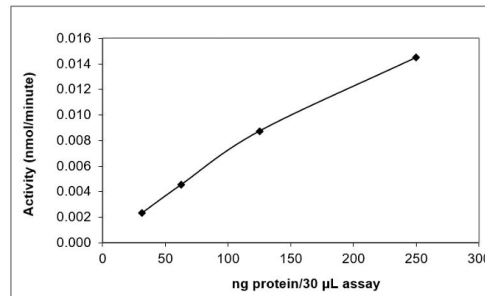
 Tel: 1-631-559-9269 1-516-512-3133

 Email: info@creative-biomart.com  Fax: 1-631-938-8127

 45-1 Ramsey Road, Shirley, NY 11967, USA

DARDARIN


Gene ID	120892
mRNA Refseq	NM_198578
Protein Refseq	NP_940980
MIM	609007
UniProt ID	Q5S007

Activity
LRRK2 G2019S Full Length Activity Graph

Dilution Buffer:


20 mM Tris (pH 7.5), 0.02% Triton X-100, 0.1 mg/mL BSA, 2 mM DTT, 1 mM Na₂VO₄ and 10% Glycerol.

Assay Conditions:

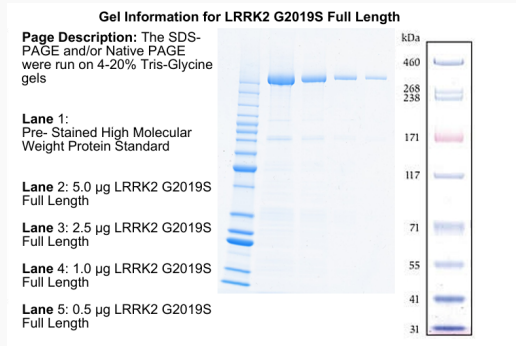
LRRK2 G2019S Full Length was pre-diluted in enzyme dilution buffer and assayed in 20 mM Tris (pH 7.5), 10 mM MgCl₂, 1 mM EGTA, 1 mM Na₂VO₄, 5 mM β-glycerophosphate, 2 mM DTT, 0.02% Triton X-100, 100 µM ATP, 250 µM ERM (LRRKtide) peptide substrate (RLGRDKYKTLRQIRQ) and trace [³²P]-γ-ATP for 10 minutes at 30°C.


 Tel: 1-631-559-9269 1-516-512-3133

 Email: info@creative-biomart.com  Fax: 1-631-938-8127

 45-1 Ramsey Road, Shirley, NY 11967, USA

SDS-PAGE



 Tel: 1-631-559-9269 1-516-512-3133

 Email: info@creative-biomart.com  Fax: 1-631-938-8127

 45-1 Ramsey Road, Shirley, NY 11967, USA