

# Active Recombinant Human LRRK2 (R1441C) Protein, GST-tagged

Cat. No. LRRK2-112H Lot. No. (See product label)

## SPECIFICATION

<b>Product Overview</b>	Recombinant human LRRK2 (R1441C) (968-end) was expressed by baculovirus in Sf9 insect cells using an N-terminal GST tag.
<b>Species</b>	Human
<b>Source</b>	Insect Cells
<b>ProteinLength</b>	968-end a.a.
<b>Description</b>	LRRK2 or leucine-rich repeat kinase is a protein with an ankryin repeat region, a leucine-rich repeat (LRR) domain, a kinase domain, a DFG-like motif, a RAS domain, a GTPase domain, a MLK-like domain, and a WD40 domain. Mutations in LRRK2 are the most frequent known cause of autosomal dominant and idiopathic Parkinson's disease with prevalent mutations being found within the GTPase and kinase domains. LRRK2 cooperates with MET to promote efficient tumor cell growth and survival in various cancers. Down-regulation of LRRK2 in cultured tumor cells compromises MET activation and selectively reduces downstream MET signaling to mTOR and STAT3.
<b>Form</b>	50mM Tris-HCl, pH 7.5, 150mM NaCl, 10mM glutathione, 0.1mM EDTA, 0.25mM DTT, 0.1mM PMSF, 25% glycerol.
<b>Bio-activity</b>	6 nmol/min/mg

 Tel: 1-631-559-9269 1-516-512-3133

 Email: [info@creative-biomart.com](mailto:info@creative-biomart.com)  Fax: 1-631-938-8127

 45-1 Ramsey Road, Shirley, NY 11967, USA

<b>Molecular Mass</b>	~210 kDa
<b>Purity</b>	>70 %
<b>Stability</b>	1 Year at -70 centigrade
<b>Storage</b>	Store product at -70 centigrade. For optimal storage, aliquot target into smaller quantities after centrifugation and store at recommended temperature. For most favorable performance, avoid repeated handling and multiple freeze/thaw cycles.
<b>Concentration</b>	0.05 µg/µL

## GENE INFORMATION

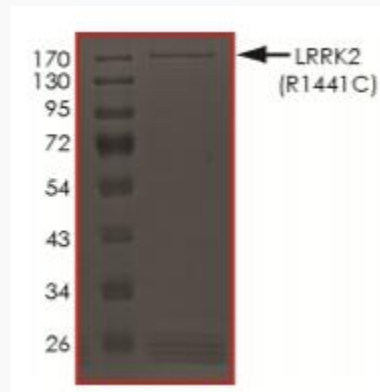
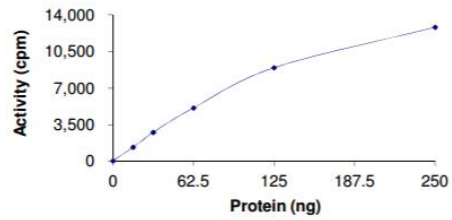
<b>Gene Name</b>	LRRK2 leucine-rich repeat kinase 2 [ Homo sapiens ]
<b>Official Symbol</b>	LRRK2
<b>Synonyms</b>	LRRK2; leucine-rich repeat kinase 2; leucine-rich repeat serine/threonine-protein kinase 2; DKFZp434H2111; FLJ45829; RIPK7; augmented in rheumatoid arthritis 17; PARK8; AURA17; DARDARIN
<b>Gene ID</b>	120892
<b>mRNA Refseq</b>	NM_198578
<b>Protein Refseq</b>	NP_940980
<b>MIM</b>	609007
<b>UniProt ID</b>	Q5S007

 Tel: 1-631-559-9269 1-516-512-3133

 Email: [info@creative-biomart.com](mailto:info@creative-biomart.com)  Fax: 1-631-938-8127

 45-1 Ramsey Road, Shirley, NY 11967, USA

**Specific Activity**



Tel: 1-631-559-9269 1-516-512-3133

Email: [info@creative-biomart.com](mailto:info@creative-biomart.com) Fax: 1-631-938-8127

45-1 Ramsey Road, Shirley, NY 11967, USA