

Recombinant Human LRRK2 protein, His-tagged

Cat. No. LRRK2-1553H Lot. No. (See product label)

SPECIFICATION

Product Overview	Recombinant Human LRRK2 aa. (Phe1479~Pro1729 (Accession # Q5S007)) fused with N-terminal His tag was produced in E. coli cells.
Species	Human
Source	E.coli
ProteinLength	Phe1479~Pro1729
Description	This gene is a member of the leucine-rich repeat kinase family and encodes a protein with an ankryin repeat region, a leucine-rich repeat (LRR) domain, a kinase domain, a DFG-like motif, a RAS domain, a GTPase domain, a MLK-like domain, and a WD40 domain. The protein is present largely in the cytoplasm but also associates with the mitochondrial outer membrane. Mutations in this gene have been associated with Parkinson disease-8.
Form	Freeze-dried powder
Molecular Mass	Predicted Molecular Mass: 31.0kDa
Endotoxin	<1.0EU per 1ug (determined by the LAL method)
Purity	>95%
Applications	SDS-PAGE; WB; ELISA; IP.

 Tel: 1-631-559-9269 1-516-512-3133

 Email: info@creative-biomart.com  Fax: 1-631-938-8127

 45-1 Ramsey Road, Shirley, NY 11967, USA

Stability	The thermal stability is described by the loss rate. The loss rate was determined by accelerated thermal degradation test, that is, incubate the protein at 37°C for 48h, and no obvious degradation and precipitation were observed. The loss rate is less than 5% within the expiration date under appropriate storage condition.
Storage	Avoid repeated freeze/thaw cycles. Store at 2-8°C for one month. Aliquot and store at -80°C for 12 months.
Storage buffer	Supplied as lyophilized form in PBS, pH7.4, containing 1mM DTT, 5% trehalose, 0.01% sarcosyl and preservative.
Reconstitution	Reconstitute in sterile PBS, pH7.2-pH7.4.
Isoelectric Point	7.8

GENE INFORMATION

Gene Name	LRRK2 leucine rich repeat kinase 2 [Homo sapiens (human)]
Official Symbol	LRRK2
Synonyms	LRRK2; leucine rich repeat kinase 2; PARK8; RIPK7; ROCO2; AURA17; DARDARIN; leucine-rich repeat serine/threonine-protein kinase 2; augmented in rheumatoid arthritis 17
Gene ID	120892
mRNA Refseq	NM_198578.3
Protein Refseq	NP_940980.3

 Tel: 1-631-559-9269 1-516-512-3133

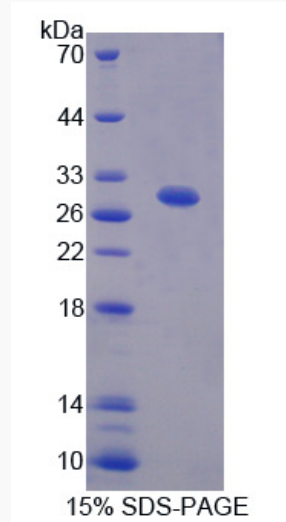
 Email: info@creative-biomart.com  Fax: 1-631-938-8127

 45-1 Ramsey Road, Shirley, NY 11967, USA

UniProt ID

Q5S007

SDS-PAGE



 Tel: 1-631-559-9269 1-516-512-3133

 Email: info@creative-biomart.com  Fax: 1-631-938-8127

 45-1 Ramsey Road, Shirley, NY 11967, USA