

## Recombinant Active Human LRRK2 (I1371V) Protein (968-end), N-GST-tagged

Cat. No. LRRK2-22H Lot. No. (See product label)

### SPECIFICATION

<b>Product Overview</b>	Recombinant human LRRK2 (I1371V) (968-end) was expressed by baculovirus in Sf9 insect cells using an N-terminal GST tag.
<b>Species</b>	Human
<b>Source</b>	Sf9 Cells
<b>ProteinLength</b>	968-end
<b>Description</b>	LRRK2 or leucine-rich repeat kinase is a protein with an ankryin repeat region, a leucine-rich repeat (LRR) domain, a kinase domain, a DFG-like motif, a RAS domain, a GTPase domain, a MLK-like domain, and a WD40 domain. Mutations in LRRK2 are the most frequent known cause of autosomal dominant and idiopathic Parkinson's disease with prevalent mutations being found within the GTPase and kinase domains. LRRK2 cooperates with MET to promote efficient tumor cell growth and survival in various cancers. Down-regulation of LRRK2 in cultured tumor cells compromises MET activation and selectively reduces downstream MET signaling to mTOR and STAT3.
<b>Bio-activity</b>	The specific activity of LRRK2 (I1371V) was determined to be 0.6 nmol/min/mg as per activity assay protocol.
<b>Molecular Mass</b>	Observed MW: ~210 kDa. Calculated MW: ~203.8 kDa.

 Tel: 1-631-559-9269 1-516-512-3133

 Email: [info@creative-biomart.com](mailto:info@creative-biomart.com)  Fax: 1-631-938-8127

 45-1 Ramsey Road, Shirley, NY 11967, USA

<b>Purity</b>	The purity of LRRK2 (I1371V) was determined to be ~ 80 % by densitometry.
<b>Stability</b>	One year at -70 centigrade from date of shipment.
<b>Storage</b>	Store product at -70 centigrade. For optimal storage, aliquot target into smaller quantities after centrifugation and store at recommended temperature. For most favorable performance, avoid repeated handling and multiple freeze/thaw cycles.
<b>Concentration</b>	0.05 µg/µL
<b>Storage Buffer</b>	Recombinant protein stored in 50mM Tris-HCl, pH 7.5, 150mM NaCl, 10mM glutathione, 0.1mM EDTA, 0.25mM DTT, and 25% glycerol.
<b>Shipping</b>	Dry ice

## GENE INFORMATION

<b>Gene Name</b>	LRRK2 leucine-rich repeat kinase 2 [ Homo sapiens (human) ]
<b>Official Symbol</b>	LRRK2
<b>Synonyms</b>	LRRK2; leucine-rich repeat kinase 2; PARK8, Parkinson disease (autosomal dominant) 8; leucine-rich repeat serine/threonine-protein kinase 2; DKFZp434H2111; FLJ45829; RIPK7; ROCO2; augmented in rheumatoid arthritis 17; PARK8; AURA17; DARDARIN;
<b>Gene ID</b>	120892
<b>mRNA Refseq</b>	NM_198578
<b>Protein Refseq</b>	NP_940980

 Tel: 1-631-559-9269 1-516-512-3133

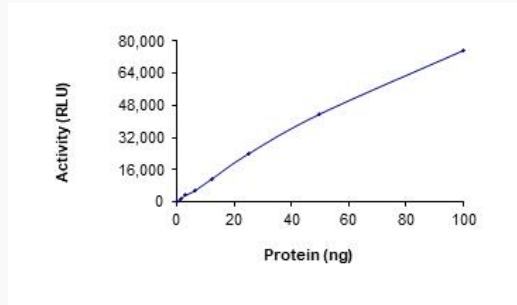
 Email: [info@creative-biomart.com](mailto:info@creative-biomart.com)  Fax: 1-631-938-8127

 45-1 Ramsey Road, Shirley, NY 11967, USA

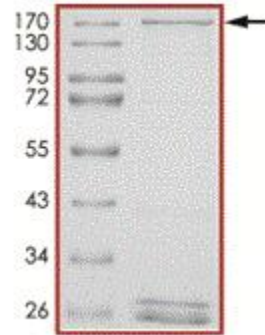
MIM 609007

UniProt ID Q5S007

Activity



Purity



Tel: 1-631-559-9269 1-516-512-3133

Email: [info@creative-biomart.com](mailto:info@creative-biomart.com) Fax: 1-631-938-8127

45-1 Ramsey Road, Shirley, NY 11967, USA