

## Recombinant Human LRRK2 Protein, GST-tagged

Cat. No. LRRK2-4634H Lot. No. (See product label)

### SPECIFICATION

<b>Product Overview</b>	Human LRRK2 partial ORF ( AAV63975, 2161 a.a. - 2260 a.a.) recombinant protein with GST-tag at N-terminal.
<b>Species</b>	Human
<b>Source</b>	Wheat Germ
<b>Description</b>	This gene is a member of the leucine-rich repeat kinase family and encodes a protein with an ankryin repeat region, a leucine-rich repeat (LRR) domain, a kinase domain, a DFG-like motif, a RAS domain, a GTPase domain, a MLK-like domain, and a WD40 domain. The protein is present largely in the cytoplasm but also associates with the mitochondrial outer membrane. Mutations in this gene have been associated with Parkinson disease-8. [provided by RefSeq
<b>Molecular Mass</b>	36.63 kDa
<b>AA Sequence</b>	NSRNASIWLGCGHTDRGQLSFLDLNTEGYTSEEVADSRILCLALVHLPVEKESWIVS GTQSGTLLVINTEDGKKRHTLEKMTDSVTCLYCNSFSKQSKQK
<b>Applications</b>	Enzyme-linked Immunoabsorbent Assay Western Blot (Recombinant protein) Antibody Production Protein Array
<b>Notes</b>	Best use within three months from the date of receipt of this protein.

 Tel: 1-631-559-9269 1-516-512-3133

 Email: [info@creative-biomart.com](mailto:info@creative-biomart.com)  Fax: 1-631-938-8127

 45-1 Ramsey Road, Shirley, NY 11967, USA

**Storage** Store at -80 centigrade. Aliquot to avoid repeated freezing and thawing.

**Storage Buffer** 50 mM Tris-HCl, 10 mM reduced Glutathione, pH=8.0 in the elution buffer.

## GENE INFORMATION

**Gene Name** [LRRK2 leucine-rich repeat kinase 2 \[ Homo sapiens \]](#)

**Official Symbol** [LRRK2](#)

**Synonyms** LRRK2; leucine-rich repeat kinase 2; PARK8, Parkinson disease (autosomal dominant) 8; leucine-rich repeat serine/threonine-protein kinase 2; DKFZp434H2111; FLJ45829; RIPK7; ROCO2; augmented in rheumatoid arthritis 17; PARK8; AURA17; DARDARIN;

**Gene ID** [120892](#)

**mRNA Refseq** [NM\\_198578](#)

**Protein Refseq** [NP\\_940980](#)

**MIM** [609007](#)

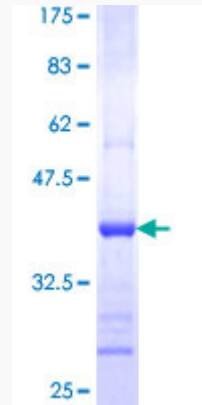
**UniProt ID** [Q5S007](#)

 Tel: 1-631-559-9269 1-516-512-3133

 Email: [info@creative-biomart.com](mailto:info@creative-biomart.com)  Fax: 1-631-938-8127

 45-1 Ramsey Road, Shirley, NY 11967, USA

**Quality Control  
Testing**



12.5% SDS-PAGE Stained with Coomassie Blue

 Tel: 1-631-559-9269 1-516-512-3133

 Email: [info@creative-biomart.com](mailto:info@creative-biomart.com)  Fax: 1-631-938-8127

 45-1 Ramsey Road, Shirley, NY 11967, USA