

## Recombinant Human LRRK2 protein, His-tagged

Cat. No. LRRK2-6453H Lot. No. (See product label)

### SPECIFICATION

<b>Product Overview</b>	Recombinant Human LRRK2 protein(Q5S007)(904-1450aa), fused with C-terminal His tag, was expressed in E.coli.
<b>Species</b>	Human
<b>Source</b>	E.coli
<b>ProteinLength</b>	904-1450a.a.
<b>Tag</b>	His
<b>Form</b>	If the delivery form is liquid, the default storage buffer is Tris/PBS-based buffer, 5%-50% glycerol. If the delivery form is lyophilized powder, the buffer before lyophilization is Tris/PBS-based buffer, 6% Trehalose, pH 8.0.
<b>Molecular Mass</b>	69.3 kDa
<b>Purity</b>	Greater than 85% as determined by SDS-PAGE.
<b>Storage</b>	Store at -20°C/-80°C upon receipt, aliquoting is necessary for mutiple use. Avoid repeated freeze-thaw cycles.
<b>Reconstitution</b>	We recommend that this vial be briefly centrifuged prior to opening to bring the contents to the bottom. Please reconstitute protein in deionized sterile water to a concentration of 0.1-1.0 mg/mL.We recommend to add 5-50% of glycerol (final

 Tel: 1-631-559-9269 1-516-512-3133

 Email: [info@creative-biomart.com](mailto:info@creative-biomart.com)  Fax: 1-631-938-8127

 45-1 Ramsey Road, Shirley, NY 11967, USA

concentration) and aliquot for long-term storage at -20°C/-80°C.

**AA Sequence**

VKKKSNSISVGEFYRDAVLQRCSPNLQRHSNSLGPFDHEDLLKRKRKILSSDDSLRS  
 SKLQSHMRHSDSISSLASEREYITSLDLSANELRDIDALSQKCCISVHLEHLEKLELHQ  
 NALTSFPQQLCETLKSLTHLDLHSNKFTSFPSYLLKMSCIANLDVSRNDIGPSVVLDP  
 TVKCPTLKQFNLSYNQLSFVPENLTDVVEKLEQLILEGNKISGICSPRLRLKELKILNLSK  
 NHISSLSENFLACPKVESFSARMNFLAAMPFLPPSMTILKLSQNKFCIPEAILNLPH  
 LRSLDMSSNDIQYLPGPAHWKSLNLRLLFSHNQISILDSEKAYLWSRVEKLHLSHN  
 KLKEIPPEIGCLENLTSLDVSYNLELRSFPNEMGKLSKIWDLPLDELHLNFDKFKHIGCK  
 AKDIIRFLQQRLKKAVPYNRMKLMIVGNTGSGKTTLLQQLMKTCKSDLGMQSATVGI  
 DVKDWPIQIRDKRKRDLVLNVWDFAGREEFYSTHPHMTQRALYLAVYDLSKGQAE  
 VDAMKPWLFNIKARASSPVILV

## GENE INFORMATION

**Gene Name** [LRRK2 leucine-rich repeat kinase 2 \[ Homo sapiens \]](#)

**Official Symbol** [LRRK2](#)

**Synonyms** LRRK2; leucine-rich repeat kinase 2; PARK8, Parkinson disease (autosomal dominant) 8; leucine-rich repeat serine/threonine-protein kinase 2; DKFZp434H2111; FLJ45829; RIPK7; ROCO2; augmented in rheumatoid arthritis 17; PARK8; AURA17; DARDARIN;

**Gene ID** [120892](#)

**mRNA Refseq** [NM\\_198578](#)

**Protein Refseq** [NP\\_940980](#)

**MIM** [609007](#)

 Tel: 1-631-559-9269 1-516-512-3133

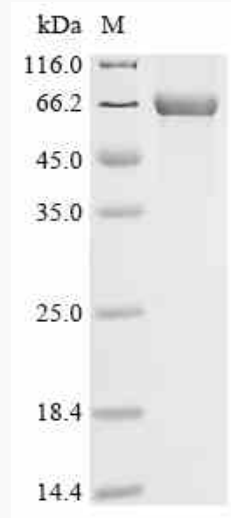
 Email: [info@creative-biomart.com](mailto:info@creative-biomart.com)  Fax: 1-631-938-8127


 45-1 Ramsey Road, Shirley, NY 11967, USA

UniProt ID

Q5S007

SDS-PAGE



 Tel: 1-631-559-9269 1-516-512-3133

 Email: [info@creative-biomart.com](mailto:info@creative-biomart.com)  Fax: 1-631-938-8127

 45-1 Ramsey Road, Shirley, NY 11967, USA