

Recombinant Human LRRN1 protein, His & GST-tagged

Cat. No. LRRN1-1879H Lot. No. (See product label)

SPECIFICATION

Product Overview	Recombinant Human LRRN1 aa. (Ser418~Ala631 (Accession # Q6UXK5)) fused with N-terminal His & GST tag was produced in E. coli cells.
Species	Human
Source	E.coli
ProteinLength	Ser418~Ala631
Form	Freeze-dried powder
Molecular Mass	Predicted Molecular Mass: 53.7kDa
Endotoxin	<1.0EU per 1ug (determined by the LAL method)
Purity	>95%
Applications	SDS-PAGE; WB; ELISA; IP.
Stability	The thermal stability is described by the loss rate. The loss rate was determined by accelerated thermal degradation test, that is, incubate the protein at 37°C for 48h, and no obvious degradation and precipitation were observed. The loss rate is less than 5% within the expiration date under appropriate storage condition.
Storage	Avoid repeated freeze/thaw cycles. Store at 2-8°C for one month. Aliquot and store at

 Tel: 1-631-559-9269 1-516-512-3133

 Email: info@creative-biomart.com  Fax: 1-631-938-8127

 45-1 Ramsey Road, Shirley, NY 11967, USA

-80°C for 12 months.

Storage buffer Supplied as lyophilized form in PBS, pH7.4, containing 5% trehalose, 0.01% sarcosyl.

Reconstitution Reconstitute in sterile PBS, pH7.2-pH7.4.

Isoelectric Point 5.2

GENE INFORMATION

Gene Name [LRRN1 leucine rich repeat neuronal 1 \[Homo sapiens \(human\) \]](#)

Official Symbol [LRRN1](#)

Synonyms LRRN1; leucine rich repeat neuronal 1; NLRR-1; FIGLER3; leucine-rich repeat neuronal protein 1; fibronectin type III, immunoglobulin and leucine rich repeat domains 3; neuronal leucine-rich repeat protein 1

Gene ID [57633](#)

mRNA Refseq [NM_001324188.1](#)

Protein Refseq [NP_001311117.1](#)

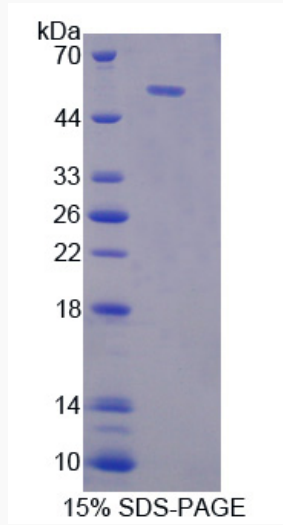
UniProt ID [Q6UXK5](#)

 Tel: 1-631-559-9269 1-516-512-3133

 Email: info@creative-biomart.com  Fax: 1-631-938-8127

 45-1 Ramsey Road, Shirley, NY 11967, USA

SDS-PAGE



 Tel: 1-631-559-9269 1-516-512-3133

 Email: info@creative-biomart.com  Fax: 1-631-938-8127

 45-1 Ramsey Road, Shirley, NY 11967, USA