

Recombinant Human LRRN1 Protein, MYC/DDK-tagged, C13 and N15-labeled

Cat. No. LRRN1-237H Lot. No. (See product label)

SPECIFICATION

Product Overview

LRRN1 MS Standard C13 and N15-labeled recombinant protein (NP_065924) with a C-terminal MYC/DDK tag, was expressed in HEK293 cells.

Species

Human

Source

HEK293

Description

LRRN1 (Leucine Rich Repeat Neuronal 1) is a Protein Coding gene. Diseases associated with LRRN1 include Corneal Dystrophy, Posterior Polymorphous, 1 and Autism Spectrum Disorder. An important paralog of this gene is LRRN3.

Molecular Mass

80.7 kDa

AA Sequence

MARMSFVIAACQLVLGLLMTSLTESSIQNSECPQLCVCEIRPWFTPQSTYREATTVD
 CNDLRLTRIPSNLSSDTQVLLLQSNNAKTVDELQQLFNLTEDFSQNNFTNIKEVGLA
 NLTQLTTLHLEENQITEMTDYCLQDLSNLQELYINHNIQISTISAHAFAGLKNLLRLHLN
 SNKLVKVIDSRWFDSTPNLEILMIGENPVIGILDMNFKPLANLRSLVLAGMYLTDIPGNA
 LVGLDSLESLSFYDNKLVKVPQLALQKVPSLKFLDLNKNPIHKIQEGDFKNMLRLKEL
 GINNMGELVSVDRYALDNLPELTKLEATNPNKLSYIHRFAFRSVPALSLMLNNNALN
 AIYQKTVESLPNLREISIHNSNPLRCDCVIHWINSNKTNIRFMEPLSMFCAMPPEYKGH
 QVKEVLIQDSSEQCLPMISHDSFPNRLNVDIGTTVFLDCRAMAEPEPEIYWVTPIGNK
 ITVETLSDKYKLSSEGTLEISNIQIEDSGRYTCVAQNVQGADTRVATIKVNGTLLDGTQ
 VLKIYVKQTESHSILVSWKVNSNVMTSNLKWSSATMKIDNPHITYTARVPVDVHEYNL

 Tel: 1-631-559-9269 1-516-512-3133

 Email: info@creative-biomart.com  Fax: 1-631-938-8127

 45-1 Ramsey Road, Shirley, NY 11967, USA

THLQPSTDYEVCLTVSNIHQQTQKSCVNVTTKNAFAVDISDQETSTALAAVMGSMF
 AVISLASIAVYFAKRFRKRNYYHSLKKYMQKTSSIPLNELYPPLINLWEGDSEKDKDG
 SADTKPTQVDTSRSYMWTRTRPLEQKLISEEDLAANDILDYKDDDDKV

Purity > 80% as determined by SDS-PAGE and Coomassie blue staining

Stability Stable for 3 months from receipt of products under proper storage and handling conditions.

Storage Store at -80 centigrade. Avoid repeated freeze-thaw cycles.

Concentration 50 µg/mL as determined by BCA

Storage Buffer 100 mM glycine, 25 mM Tris-HCl, pH 7.3.

GENE INFORMATION

Gene Name [LRRN1 leucine rich repeat neuronal 1 \[Homo sapiens \(human\) \]](#)

Official Symbol [LRRN1](#)

Synonyms LRRN1; leucine rich repeat neuronal 1; NLRR-1; FIGLER3; leucine-rich repeat neuronal protein 1; fibronectin type III, immunoglobulin and leucine rich repeat domains 3; neuronal leucine-rich repeat protein 1

Gene ID [57633](#)

mRNA Refseq [NM_020873](#)

Protein Refseq [NP_065924](#)

 Tel: 1-631-559-9269 1-516-512-3133

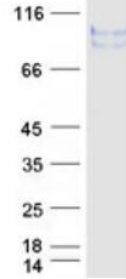
 Email: info@creative-biomart.com  Fax: 1-631-938-8127

 45-1 Ramsey Road, Shirley, NY 11967, USA

UniProt ID

Q6UXK5

SDS-PAGE



 Tel: 1-631-559-9269 1-516-512-3133

 Email: info@creative-biomart.com  Fax: 1-631-938-8127

 45-1 Ramsey Road, Shirley, NY 11967, USA