

## Recombinant Human LRRN1 Protein, GST/pstS1-tagged

Cat. No. LRRN1-4632H Lot. No. (See product label)

### SPECIFICATION

|                         |   |
|-------------------------|---|
| <b>Product Overview</b> | Human LRRN1 full-length ORF (CAL37408.1, 1 a.a. - 716 a.a.) recombinant protein with GST-pstS1 tag at N-terminal.   |
| <b>Species</b>          | Human   |
| <b>Source</b>           | Wheat Germ  |
| <b>Description</b>      | LRRN1 (Leucine Rich Repeat Neuronal 1) is a Protein Coding gene. An important paralog of this gene is LRRN3.  |
| <b>Molecular Mass</b>   | 106.7 kDa   |
| <b>AA Sequence</b>      | <p>MARMSFVIAACQLVLGLLMTSLTESSIQNSECPQLCVCEIRPWFTPQSTYREATTVD<br/>           CNDLRLTRIPSNLSSDTQVLLLQSNNAIAKTVDELQQLFNLTEDFSQNNFTNIKEVGLA<br/>           NLTQLTTLHLEENQITEMTDYCLQDLSNLQELYINHNQISTISAHAFAGLKNLLRLHLN<br/>           SNKLVKVIDSRWFDSTPNLEILMIGENPVIGILDMNFKPLANLRSLVLAGMYLTDIPGNA<br/>           LVGLDSLESLSFYDNKLVKVPQLALQKVPSLKFLDLNKNPIHKIQEGDFKNMLRLKEL<br/>           GINNMGELVSVDRYALDNLPELTKLEATNPNKLSYIHRFAFRSVPALSLMLNNNALN<br/>           AIYQKTVESLPNLREISIHNSPLRCDCVIHWINSNKTNIRFMEPLSMFCAMPPEYKGH<br/>           QVKEVLIQDSSEQCLPMISHDSFPNRLNVDIGTTVFLDCRAMAEPEPEIYWVTPIGNK<br/>           ITVETLSDKYKLSSEGTLEISNIQIEDSGRYTCVAQNVQGADTRVATIKVNGTLLDGTQ<br/>           VLKIYVKQTESHSILVSWKVNSNVMTSNLKWSSATMKIDNPHITYTARVPVDVHEYNL<br/>           THLQPSTDYEVCLTVSNIHQQTQKSCVNVTTKNAFAVDISDQETSTALAAVMGSMF<br/>           AVISLASIAVYFAKRFRKKNYHHSLLKKYMQKTSSIPLNELYPPLINLWEGDSEKDKDG</p> |

Tel: 1-631-559-9269 1-516-512-3133

Email: [info@creative-biomart.com](mailto:info@creative-biomart.com) Fax: 1-631-938-8127

45-1 Ramsey Road, Shirley, NY 11967, USA

SADTKPTQVDTSRSYMW

**Applications**

Enzyme-linked Immunoabsorbent Assay  
 Western Blot (Recombinant protein)  
 Antibody Production  
 Protein Array

**Notes**

Best use within three months from the date of receipt of this protein.

**Storage**

Store at -80 centigrade. Aliquot to avoid repeated freezing and thawing.

**Storage Buffer**

50 mM Tris-HCl, 10 mM reduced Glutathione, pH=8.0 in the elution buffer.

**GENE INFORMATION**

**Gene Name**

LRRN1 leucine rich repeat neuronal 1 [ Homo sapiens (human) ]

**Official Symbol**

LRRN1

**Synonyms**

LRRN1; leucine rich repeat neuronal 1; NLRR-1; FIGLER3; leucine-rich repeat neuronal protein 1; fibronectin type III, immunoglobulin and leucine rich repeat domains 3; neuronal leucine-rich repeat protein 1

**Gene ID**

57633

**mRNA Refseq**

NM\_001324188

**Protein Refseq**

NP\_001311117

**UniProt ID**

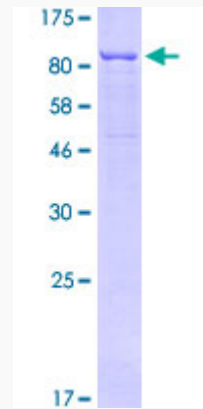
Q6UXK5

 Tel: 1-631-559-9269 1-516-512-3133

 Email: [info@creative-biomart.com](mailto:info@creative-biomart.com)  Fax: 1-631-938-8127

 45-1 Ramsey Road, Shirley, NY 11967, USA

**Quality Control  
Testing**



12.5% SDS-PAGE Stained with Coomassie Blue

 Tel: 1-631-559-9269 1-516-512-3133

 Email: [info@creative-biomart.com](mailto:info@creative-biomart.com)  Fax: 1-631-938-8127

 45-1 Ramsey Road, Shirley, NY 11967, USA