

## Recombinant Human LRRN1 Protein, GST-tagged

Cat. No. LRRN1-4633H Lot. No. (See product label)

### SPECIFICATION

<b>Product Overview</b>	Human LRRN1 full-length ORF ( CAL37408.1, 1 a.a. - 716 a.a.) recombinant protein with GST-tag at N-terminal.
<b>Species</b>	Human
<b>Source</b>	Wheat Germ
<b>Description</b>	LRRN1 (Leucine Rich Repeat Neuronal 1) is a Protein Coding gene. An important paralog of this gene is LRRN3.
<b>Molecular Mass</b>	105.27 kDa
<b>AA Sequence</b>	<p>MARMSFVIAACQLVLGLLMTSLTESSIQNSECPQLCVCEIRPWFTPQSTYREATTVD  CNDLRLTRIPSNLSSDTQVLLLQSNNAIAKTVDELQQLFNLTEDFSQNNFTNIKEVGLA  NLTQLTTLHLEENQITEMTDYCLQDLSNLQELYINHNQISTISAHAFAGLKNLLRLHLN  SNKLVKVIDSRWFDSTPNLEILMIGENPVIGILDMNFKPLANLRSLVLAGMYLTDIPGNA  LVGLDSLESLSFYDNKLVKVPQLALQKVPSLKFLDLNKNPIHKIQEGDFKNMLRLKEL  GINNMGELVSVDRYALDNLPELTKLEATNPNKLSYIHLAFRSVPALESMLNNAALN  AIYQKTVESLPNLREISIHNSNPLRCDCVIHWINSNKTNIRFMEPLSMFCAMPPEYKGH  QVKEVLIQDSSEQCLPMISHDSFPNRLNVDIGTTVFLDCRAMAEPEPEIYWVTPIGNK  ITVETLSDKYKLSSEGTLEISNIQIEDSGRYTCVAQNVQGADTRVATIKVNGTLLDGTQ  VLKIYVKQTESHSILVSWKVNSNVMTSNLKWSSATMKIDNPHITYTARVPVDVHEYNL  THLQPSTDYEVCLTVSNIHQQTQKSCVNVTTKNAFAVDISDQETSTALAAVMGSMF  AVISLASIAVYFAKRFRKKNYHHSLLKKYMQKTSSIPLNELYPPLINLWEGDSEKDKDG</p>

 Tel: 1-631-559-9269 1-516-512-3133

 Email: [info@creative-biomart.com](mailto:info@creative-biomart.com)  Fax: 1-631-938-8127

 45-1 Ramsey Road, Shirley, NY 11967, USA

SADTKPTQVDTSRSYMW

**Applications**

Enzyme-linked Immunoabsorbent Assay  
 Western Blot (Recombinant protein)  
 Antibody Production  
 Protein Array

**Notes**

Best use within three months from the date of receipt of this protein.

**Storage**

Store at -80 centigrade. Aliquot to avoid repeated freezing and thawing.

**Storage Buffer**

50 mM Tris-HCl, 10 mM reduced Glutathione, pH=8.0 in the elution buffer.

**GENE INFORMATION**

**Gene Name**

LRRN1 leucine rich repeat neuronal 1 [ Homo sapiens (human) ]

**Official Symbol**

LRRN1

**Synonyms**

LRRN1; leucine rich repeat neuronal 1; NLRR-1; FIGLER3; leucine-rich repeat neuronal protein 1; fibronectin type III, immunoglobulin and leucine rich repeat domains 3; neuronal leucine-rich repeat protein 1

**Gene ID**

57633

**mRNA Refseq**

NM\_001324188

**Protein Refseq**

NP\_001311117

**UniProt ID**

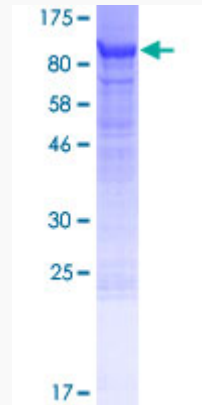
Q6UXK5

 Tel: 1-631-559-9269 1-516-512-3133

 Email: [info@creative-biomart.com](mailto:info@creative-biomart.com)  Fax: 1-631-938-8127

 45-1 Ramsey Road, Shirley, NY 11967, USA

**Quality Control  
Testing**



12.5% SDS-PAGE Stained with Coomassie Blue

 Tel: 1-631-559-9269 1-516-512-3133

 Email: [info@creative-biomart.com](mailto:info@creative-biomart.com)  Fax: 1-631-938-8127

 45-1 Ramsey Road, Shirley, NY 11967, USA