

Recombinant Human LRRTM2 Protein (Cys34-Arg422), C-His tagged

Cat. No. LRRTM2-4184H Lot. No. (See product label)

SPECIFICATION

Product Overview	Recombinant human LRRTM2 (Cys34-Arg422) fused with the C-terminal His tag was expressed in Mammalian cells.
Species	Human
Source	Mammalian Cells
ProteinLength	Cys34-Arg422
Form	Lyophilized powder/frozen liquid
Molecular Mass	42.79 kDa
Endotoxin	< 1.0 EU/μg of the protein as determined by the LAL method.
Purity	>90% as determined by SDS-PAGE.
Notes	For research use only.
Storage	Use a manual defrost freezer and avoid repeated freeze thaw cycles. Store at 2 to 8 centigrade for one week. Store at -20 to -80 centigrade for twelve months from the date of receipt.
Storage Buffer	Supplied as solution form in PBS or lyophilized from PBS.

 Tel: 1-631-559-9269 1-516-512-3133

 Email: info@creative-biomart.com  Fax: 1-631-938-8127

 45-1 Ramsey Road, Shirley, NY 11967, USA

Reconstitution Reconstitute in sterile water for a stock solution.

Shipping They are shipped out with dry ice/blue ice unless customers require otherwise.

GENE INFORMATION

Gene Name [LRRTM2 leucine rich repeat transmembrane neuronal 2 \[Homo sapiens \(human\) \]](#)

Official Symbol [LRRTM2](#)

Synonyms LRRTM2; leucine rich repeat transmembrane neuronal 2; leucine-rich repeat transmembrane neuronal protein 2; KIAA0416; leucine-rich repeat neuronal 2 protein; leucine-rich repeat transmembrane neuronal 2 protein; FLJ76283; FLJ99831;

Gene ID [26045](#)

mRNA Refseq [NM_015564](#)

Protein Refseq [NP_056379](#)

MIM [610868](#)

UniProt ID [O43300](#)

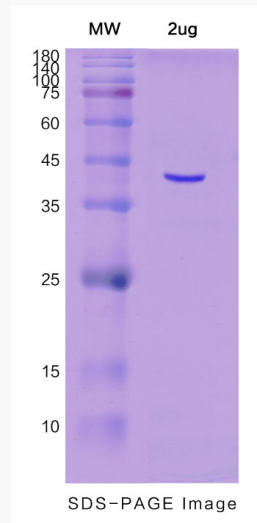
 Tel: 1-631-559-9269 1-516-512-3133

 Email: info@creative-biomart.com  Fax: 1-631-938-8127

 45-1 Ramsey Road, Shirley, NY 11967, USA



SDS-PAGE



Tel: 1-631-559-9269 1-516-512-3133

Email: info@creative-biomart.com Fax: 1-631-938-8127

45-1 Ramsey Road, Shirley, NY 11967, USA