

Recombinant Human LRRTM4 Protein, His-tagged

Cat. No. LRRTM4-3351H Lot. No. (See product label)

SPECIFICATION

Product Overview	Recombinant Human LRRTM4 protein(31-424 aa), fused with C-terminal His tag, was expressed in HEK293.
Species	Human
Source	HEK293
ProteinLength	31-424 aa
Tag	C-His
Form	Liquid in sterile PBS, pH7.4, 8% Trehalose, 10% Glycerol.
Molecular Mass	The protein has a calculated MW of 47 kDa.
Endotoxin	<1.0EU per 1µg (determined by the LAL method).
Purity	> 90 % as determined by SDS-PAGE.
Storage	Store it under sterile conditions at -20 to -80°C. It is recommended that the protein be aliquoted for optimal storage. Avoid repeated freeze-thaw cycles.
Concentration	0.6 mg/ml. Centrifuge the vial at 4°C before opening to recover the entire contents.
Reconstitution	It is recommended that sterile water be added to the vial to prepare a stock solution of

 Tel: 1-631-559-9269 1-516-512-3133

 Email: info@creative-biomart.com  Fax: 1-631-938-8127

 45-1 Ramsey Road, Shirley, NY 11967, USA

0.2 ug/ul. Centrifuge the vial at 4°C before opening to recover the entire contents.

AA Sequence

QRACPKNCRCDGKIVYCESHAFADIPENISGGSQGLSLRFNSIQKLSNQFAGLNQLI
 WLYLDHNYISSVDEDAFQGIRRLKELILSSNKITYLHNKTFHPVNLRLDLSYNKLQT
 LQSEQFKGLRKLIIHLRSNSLKTVPPIRVFQDCRNLDFLDLGYNRLRSLSRNAFAGLLK
 LKELHLEHNQFSKINFAPRPFNLRSIYLQWNRIRISISQGLTWTWSSLHNLDSLGNL
 IQGIEPGTFKCLPNLQKLNLDLSDNKLTDNISQETVNAWISLISITLSGNMWECSRSICPLF
 YWLKNFKGNKESTMICAGPKHIQGEKVSDAVETYNICSEVQVVNTERSHLVPQTPQ
 KPLIIPRPTIFKPDVTQSTFETPSPSPGFQIPGAEQEYEHVSFHKAHHHHHHHHHH

GENE INFORMATION

Gene Name [LRRTM4 leucine rich repeat transmembrane neuronal 4 \[Homo sapiens \]](#)

Official Symbol [LRRTM4](#)

Synonyms LRRTM4; leucine rich repeat transmembrane neuronal 4; leucine-rich repeat transmembrane neuronal protein 4; FLJ12568; leucine-rich repeat transmembrane neuronal 4 protein; MGC120633; MGC120636;

Gene ID [80059](#)

mRNA Refseq [NM_024993](#)

Protein Refseq [NP_079269](#)

MIM [610870](#)

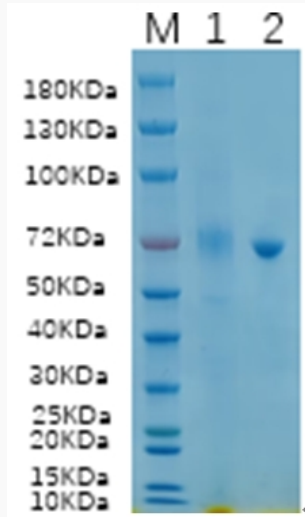
UniProt ID [Q86VH4](#)

 Tel: 1-631-559-9269 1-516-512-3133

 Email: info@creative-biomart.com  Fax: 1-631-938-8127

 45-1 Ramsey Road, Shirley, NY 11967, USA

SDS-PAGE



Lane 1: LRRTM4-3351H; Lane 2: BSA

 Tel: 1-631-559-9269 1-516-512-3133

 Email: info@creative-biomart.com  Fax: 1-631-938-8127

 45-1 Ramsey Road, Shirley, NY 11967, USA