

Recombinant Full Length Human LRTM2 Protein, C-Flag-tagged

Cat. No. LRTM2-1572HFL Lot. No. (See product label)

SPECIFICATION

Product Overview

Recombinant Full Length Human LRTM2 Protein, fused to Flag-tag at C-terminus, was expressed in Mammalian cells.

Species

Human

Source

Mammalian Cells

Description

Predicted to enable Roundabout binding activity and heparin binding activity. Predicted to be involved in axon guidance and negative chemotaxis. Predicted to act upstream of or within positive regulation of synapse assembly. Predicted to be integral component of membrane.

Form

25 mM Tris HCl, pH 7.3, 100 mM glycine, 10% glycerol.

Molecular Mass

41 kDa

AA Sequence

MLAPGSSPGQRGRLALQWRQVSWITCWIALYAVEALPTCPFSCCKDSRSLEVDCS
 GLGLTTVPPDVPAAT RTLLLLNKNLSALPSWAFANLSSLQRDLSDSNNFLDRLPRSIFG
 DLTNLTELQLRNNSIRTLDRDLLRHSP LLRHLDLSINGLAQLPPGLFDGLLALRSLSL
 RSNRLQNLDRLTFEPLANLQLLQVGDNPWECDCNLREFK HWMEWFSYRGGRLDQ
 LACTLPKELRGKDMRMVPMEMFNYSQLEDENSAGLDIPGPPCTKASPEPAKPK
 PGAEPEPEPSTACPQKQRHRPASVRRAMGTVIIAGVVCVVCIMMVVAAAYGCIYA
 SLMAKYHRELKKRQ
 PLMGDPEGEHEDQKQISSVATRTRPLEQKLISEEDLAANDILDYKDDDDKV

 Tel: 1-631-559-9269 1-516-512-3133

 Email: info@creative-biomart.com  Fax: 1-631-938-8127

 45-1 Ramsey Road, Shirley, NY 11967, USA

Purity	> 80% as determined by SDS-PAGE and Coomassie blue staining.
Stability	Stable for 12 months from the date of receipt of the product under proper storage and handling conditions. Avoid repeated freeze-thaw cycles.
Storage	Store at -80 centigrade.
Concentration	>50 ug/mL as determined by microplate BCA method.
Preparation	Recombinant protein was captured through anti-DDK affinity column followed by conventional chromatography steps.
Protein Families	Transmembrane
Full Length	Full L.

GENE INFORMATION

Gene Name	LRTM2 leucine rich repeats and transmembrane domains 2 [Homo sapiens (human)]
Official Symbol	LRTM2
Synonyms	FLJ42697
Gene ID	654429
mRNA Refseq	NM_001039029.3
Protein Refseq	NP_001034118.1

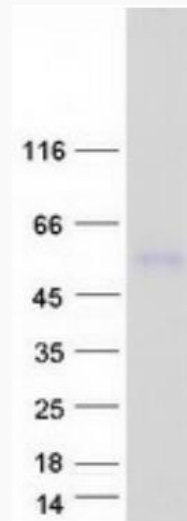
 Tel: 1-631-559-9269 1-516-512-3133

 Email: info@creative-biomart.com  Fax: 1-631-938-8127

 45-1 Ramsey Road, Shirley, NY 11967, USA

UniProt ID

Q8N967



Coomassie blue staining of purified LRTM2 protein.

 Tel: 1-631-559-9269 1-516-512-3133

 Email: info@creative-biomart.com  Fax: 1-631-938-8127

 45-1 Ramsey Road, Shirley, NY 11967, USA