

Recombinant Human LSAMP Protein (Val29-Asn315), C-His tagged

Cat. No. LSAMP-4461H Lot. No. (See product label)

SPECIFICATION

Product Overview	Recombinant human LSAMP (Val29-Asn315) fused with the C-terminal His tag was expressed in Mammalian cells.
Species	Human
Source	Mammalian Cells
ProteinLength	Val29-Asn315
Form	Lyophilized powder/frozen liquid
Molecular Mass	31.57 kDa
Endotoxin	< 1.0 EU/μg of the protein as determined by the LAL method.
Purity	>90% as determined by SDS-PAGE.
Notes	For research use only.
Storage	Use a manual defrost freezer and avoid repeated freeze thaw cycles. Store at 2 to 8 centigrade for one week. Store at -20 to -80 centigrade for twelve months from the date of receipt.
Storage Buffer	Supplied as solution form in PBS or lyophilized from PBS.

 Tel: 1-631-559-9269 1-516-512-3133

 Email: info@creative-biomart.com  Fax: 1-631-938-8127

 45-1 Ramsey Road, Shirley, NY 11967, USA

Reconstitution Reconstitute in sterile water for a stock solution.

Shipping They are shipped out with dry ice/blue ice unless customers require otherwise.

GENE INFORMATION

Gene Name LSAMP limbic system-associated membrane protein [Homo sapiens (human)]

Official Symbol LSAMP

Synonyms LSAMP; limbic system-associated membrane protein; IgLON family member 3; IGLON3; LAMP; FLJ34254; FLJ35396; FLJ37216; FLJ54658;

Gene ID 4045

mRNA Refseq NM_002338

Protein Refseq NP_002329

MIM 603241

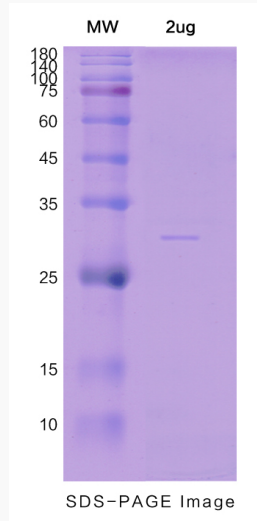
UniProt ID Q13449

 Tel: 1-631-559-9269 1-516-512-3133

 Email: info@creative-biomart.com  Fax: 1-631-938-8127

 45-1 Ramsey Road, Shirley, NY 11967, USA

SDS-PAGE



 Tel: 1-631-559-9269 1-516-512-3133

 Email: info@creative-biomart.com  Fax: 1-631-938-8127

 45-1 Ramsey Road, Shirley, NY 11967, USA