

## Recombinant Human LSAMP Protein, GST-tagged

**Cat. No.** LSAMP-4620H    **Lot. No.** (See product label)

### SPECIFICATION

<b>Product Overview</b>	Human LSAMP full-length ORF (AAH33803, 29 a.a. - 338 a.a.) recombinant protein with GST-tag at N-terminal.
<b>Species</b>	Human
<b>Source</b>	Wheat Germ
<b>Description</b>	The protein encoded by this gene is a neuronal surface glycoprotein found in cortical and subcortical regions of the limbic system. During development of the limbic system, this encoded protein is found on the surface of axonal membranes and growth cones, where it acts as a selective homophilic adhesion molecule, and guides the development of specific patterns of neuronal connections. [provided by RefSeq]
<b>Molecular Mass</b>	59.62 kDa
<b>AA Sequence</b>	VRSVDFNRGTDNITVRQGDTAILRCVVEDKNSKVAWLNRSIIFAGHDKWSLDPRVE LEKRHSLEYSRLRIQKVDVYDEGSYTCVQQTQHEPKTSQVYLIVQVPPKISNISSDVTV NEGSNVTLCMANGRPEPVITWRHLTPTGREFEGEEEYLEILGITREQSGKYECKAA NEVSSADVKQVKVTVNYPPTITESKSNEATTGRQASLKCEASAVPAPDFEWYRDDT RINSANGLEIKSTEGQSSLTVTNVTEEHYGNITCVAANKLGVTNASLVLFPRPGSVRGI NGSISLAVPLWLLAASLLCLLSKC
<b>Applications</b>	Enzyme-linked Immunoabsorbent Assay Western Blot (Recombinant protein) Antibody Production

 Tel: 1-631-559-9269    1-516-512-3133

 Email: [info@creative-biomart.com](mailto:info@creative-biomart.com)     Fax: 1-631-938-8127

 45-1 Ramsey Road, Shirley, NY 11967, USA

**Protein Array**

<b>Notes</b>	Best use within three months from the date of receipt of this protein.
<b>Storage</b>	Store at -80 centigrade. Aliquot to avoid repeated freezing and thawing.
<b>Storage Buffer</b>	50 mM Tris-HCl, 10 mM reduced Glutathione, pH=8.0 in the elution buffer.

**GENE INFORMATION**

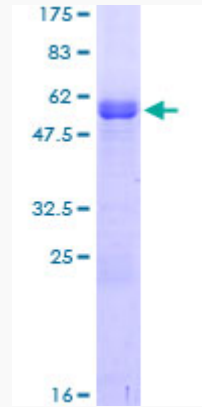
<b>Gene Name</b>	LSAMP limbic system-associated membrane protein [ Homo sapiens ]
<b>Official Symbol</b>	LSAMP
<b>Synonyms</b>	LSAMP; limbic system-associated membrane protein; IgLON family member 3; IGLON3; LAMP; FLJ34254; FLJ35396; FLJ37216; FLJ54658;
<b>Gene ID</b>	4045
<b>mRNA Refseq</b>	NM_002338
<b>Protein Refseq</b>	NP_002329
<b>MIM</b>	603241
<b>UniProt ID</b>	Q13449

 Tel: 1-631-559-9269 1-516-512-3133

 Email: [info@creative-biomart.com](mailto:info@creative-biomart.com)  Fax: 1-631-938-8127

 45-1 Ramsey Road, Shirley, NY 11967, USA

**Quality Control  
Testing**



12.5% SDS-PAGE Stained with Coomassie Blue

 Tel: 1-631-559-9269 1-516-512-3133

 Email: [info@creative-biomart.com](mailto:info@creative-biomart.com)  Fax: 1-631-938-8127

 45-1 Ramsey Road, Shirley, NY 11967, USA