

## Recombinant Human LSM2 Protein, His-tagged

**Cat. No.** LSM2-4612H    **Lot. No.** (See product label)

### SPECIFICATION

<b>Product Overview</b>	Human LSM2 (NP_067000, 1 a.a. - 95 a.a.) full-length recombinant protein with His tag expressed in Escherichia coli.
<b>Species</b>	Human
<b>Source</b>	E.coli
<b>Description</b>	Sm-like proteins were identified in a variety of organisms based on sequence homology with the Sm protein family (see SNRPD2; MIM 601061). Sm-like proteins contain the Sm sequence motif, which consists of 2 regions separated by a linker of variable length that folds as a loop. The Sm-like proteins are thought to form a stable heteromer present in tri-snRNP particles, which are important for pre-mRNA splicing.[supplied by OMIM
<b>Form</b>	Liquid
<b>Molecular Mass</b>	13.4 kDa
<b>AA Sequence</b>	MGSSHHHHHHSSGLVPRGSHMGSHMLFYFFKSLVGKDVVVELKNDLSICGTLHSV DQYLNKLTDISVTDPEKYPHMLSVKNCFIRGSVVRYVQLPADEVDTQLLQDAARKE ALQKQK
<b>Purity</b>	> 90% by SDS-PAGE
<b>Applications</b>	SDS-PAGE

 Tel: 1-631-559-9269    1-516-512-3133

 Email: [info@creative-biomart.com](mailto:info@creative-biomart.com)     Fax: 1-631-938-8127

 45-1 Ramsey Road, Shirley, NY 11967, USA

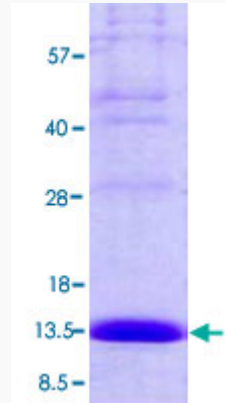
<b>Storage</b>	Store at 4 centigrade for 1-2 weeks. For long term storage store at -20 centigrade or -80 centigrade. Aliquot to avoid repeated freezing and thawing.
<b>Concentration</b>	0.5 mg/mL
<b>Storage Buffer</b>	In 20 mM Tris-HCl, 200 mM NaCl, pH 8.0 (5 mM DTT, 40% glycerol)
<b>GENE INFORMATION</b>	
<b>Gene Name</b>	LSM2 LSM2 homolog, U6 small nuclear RNA and mRNA degradation associated [ Homo sapiens (human) ]
<b>Official Symbol</b>	LSM2
<b>Synonyms</b>	LSM2; LSM2 homolog, U6 small nuclear RNA and mRNA degradation associated; G7B; snRNP; C6orf28; YBL026W; U6 snRNA-associated Sm-like protein LSm2; LSM2 U6 small nuclear RNA and mRNA degradation associated; LSM2 homolog, U6 small nuclear RNA associated; protein G7b; small nuclear ribonuclear protein D homolog; snRNP core Sm-like protein Sm-x5
<b>Gene ID</b>	<a href="https://www.ncbi.nlm.nih.gov/gene/?term=57819">https://www.ncbi.nlm.nih.gov/gene/?term=57819</a>
<b>mRNA Refseq</b>	NM_021177
<b>Protein Refseq</b>	NP_067000
<b>MIM</b>	607282
<b>UniProt ID</b>	Q9Y333

 Tel: 1-631-559-9269 1-516-512-3133

 Email: [info@creative-biomart.com](mailto:info@creative-biomart.com)  Fax: 1-631-938-8127

 45-1 Ramsey Road, Shirley, NY 11967, USA

**Quality Control  
Testing**



Loading 3  $\mu$ g protein in 15% SDS-PAGE

 Tel: 1-631-559-9269 1-516-512-3133

 Email: [info@creative-biomart.com](mailto:info@creative-biomart.com)  Fax: 1-631-938-8127

 45-1 Ramsey Road, Shirley, NY 11967, USA