

Recombinant Human LSP1 Protein, GST-tagged

Cat. No. LSP1-4602H Lot. No. (See product label)

SPECIFICATION

Product Overview	Human LSP1 partial ORF (NP_002330.1, 240 a.a. - 338 a.a.) recombinant protein with GST-tag at N-terminal.
Species	Human
Source	Wheat Germ
Description	This gene encodes an intracellular F-actin binding protein. The protein is expressed in lymphocytes, neutrophils, macrophages, and endothelium and may regulate neutrophil motility, adhesion to fibrinogen matrix proteins, and transendothelial migration. Alternative splicing results in multiple transcript variants encoding different isoforms. [provided by RefSeq]
Molecular Mass	36.63 kDa
AA Sequence	TAGRTPKLARQASIELPSMAVASTKSRWETGEVQAQSAAKTPSCKDIVAGDMSKKS LWEQKGGSKTSSTIKSTPSGKRYK FVATGHGKYEKVLVEGGPA
Applications	Enzyme-linked Immunoabsorbent Assay Western Blot (Recombinant protein) Antibody Production Protein Array
Notes	Best use within three months from the date of receipt of this protein.

 Tel: 1-631-559-9269 1-516-512-3133

 Email: info@creative-biomart.com  Fax: 1-631-938-8127

 45-1 Ramsey Road, Shirley, NY 11967, USA

Storage Store at -80 centigrade. Aliquot to avoid repeated freezing and thawing.

Storage Buffer 50 mM Tris-HCl, 10 mM reduced Glutathione, pH=8.0 in the elution buffer.

GENE INFORMATION

Gene Name [LSP1 lymphocyte-specific protein 1 \[Homo sapiens \]](#)

Official Symbol [LSP1](#)

Synonyms LSP1; lymphocyte-specific protein 1; WP34; 52 kDa phosphoprotein; 47 kDa actin binding protein; 47 kDa actin-binding protein; leukocyte-specific protein 1; lymphocyte-specific antigen WP34; leufactin (leukocyte F-actin binding protein); F-actin binding and cytoskeleton associated protein; pp52;

Gene ID [4046](#)

mRNA Refseq [NM_001013253](#)

Protein Refseq [NP_001013271](#)

MIM [153432](#)

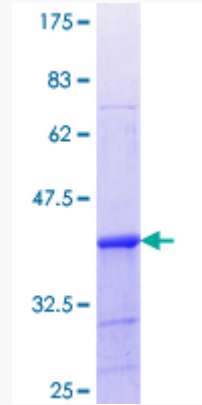
UniProt ID [P33241](#)

 Tel: 1-631-559-9269 1-516-512-3133

 Email: info@creative-biomart.com  Fax: 1-631-938-8127

 45-1 Ramsey Road, Shirley, NY 11967, USA

**Quality Control
Testing**



12.5% SDS-PAGE Stained with Coomassie Blue

 Tel: 1-631-559-9269 1-516-512-3133

 Email: info@creative-biomart.com  Fax: 1-631-938-8127

 45-1 Ramsey Road, Shirley, NY 11967, USA