

## Recombinant Full Length Human LSR Protein, His&GST tagged

Cat. No. LSR-6056HF Lot. No. (See product label)

### SPECIFICATION

**Species** Human

**Source** HEK293

**ProteinLength** 1-649 aa

**Description** Predicted to be involved in several processes, including establishment of skin barrier; protein localization to tricellular tight junction; and tricellular tight junction assembly. Located in plasma membrane and tight junction.

**Molecular Mass** 99 kDa

**AA Sequence**

MSPILGYWKIKGLVQPTRLLEYLEEKYEEHLYERDEGDKWRNKKFELGLEFPNLPY  
YIDGDVKLTQSMARIYIADKHNMLGGCPKERAEISMLEGAVLDIRYGVSR IAYS KDFE  
TLKVDFLSKLPEMLKMFEDRLCHKTYLNGDHVTHPDFMLYDALDVVLYMDPMCLDA  
FPKLVCFKKRIEAI PQIDKYLKSSKYIAWPLQG WQATFGGGDHPPKSDLVPRGSMQQ  
DGLGVGTRNGSGKGRSVHPSWPWCAPRPLRYFGRDARARRAQTAA MALLAGGLS  
RGLGSHPAAGRDAVVFWLLLSTWCTAPARAIQVTVSNPYHVILFQPVTLPCTYQ  
MTSTPTQPIVIWKYKSFCDRIADAFSPASVDNQLNAQLAAGNPGYNPYVEQCDSV  
RTVRVVATKQGNVTLGDYYQGRITITGNADLTFDQTAWGDSGVVYCSVVSAQDL  
QGNNEAYAELIVLGR TSGVAELLPGFQAGPIEDWLFVVVVCLA AFLIFLLLGICWCQC  
CPHTCCCYVRCPCCPDKCCCPEALYAAGKAATSGVPSIYAPSTY AHLSPAKT P P P P  
AMIPMGPAYNGYPGGYPGDVDRSSSAGGQGSYVPLLRDTDSSVASEVRSGYRIQA

 Tel: 1-631-559-9269 1-516-512-3133

 Email: [info@creative-biomart.com](mailto:info@creative-biomart.com)  Fax: 1-631-938-8127

 45-1 Ramsey Road, Shirley, NY 11967, USA

SQQDDSMRVLYYMEKELANFDPSRPGPPSGRVERAMSEVTSLHEDDWRSRPSRG  
 PALTPIRDEEWGGHSPRSRPGWDQEPAREQAGGGWRARRPRARSVDALDDLTPP  
 STAESGSRSPTSNGGRSRAYMPPRSRSRDDLYDQDDSRDFPFRSRDPHYDDFRSR  
 ERPPADPRSHHHRTRDPRDNGSRSGDLPYDGRLLLEEAVRKKKGSEERRRPHKEEEE  
 EAYYPPAPPYSETDSQASRERRLKKNLALSRESLVVHHHHHHHHHHHHH

**Endotoxin** < 1 EU/μg by LAL

**Storage** Store it under sterile conditions at -20 to -80 centigrade. It is recommended that the protein be aliquoted for optimal storage. Avoid repeated freeze-thaw cycles.

**Storage Buffer** Sterile 20 mM Tris, pH8.0, 150 mM NaCl, 0.1% SKL

**Concentration** 0.36 mg/mL by BCA

## GENE INFORMATION

**Gene Name** [LSR lipolysis stimulated lipoprotein receptor \[ Homo sapiens \(human\) \]](#)

**Official Symbol** [LSR](#)

**Synonyms** LSR; lipolysis stimulated lipoprotein receptor; lipolysis-stimulated lipoprotein receptor; ILDR3; immunoglobulin like domain containing receptor 3; lipolysis stimulated remnant; LISCH7; LISCH protein; lipolysis-stimulated remnant; lipolysis-stimulated receptor; liver-specific bHLH-Zip transcription factor; immunoglobulin-like domain containing receptor 3; MGC10659; MGC48312; MGC48503

**Gene ID** [51599](#)

**mRNA Refseq** [NM\\_015925](#)

 Tel: 1-631-559-9269 1-516-512-3133

 Email: [info@creative-biomart.com](mailto:info@creative-biomart.com)  Fax: 1-631-938-8127

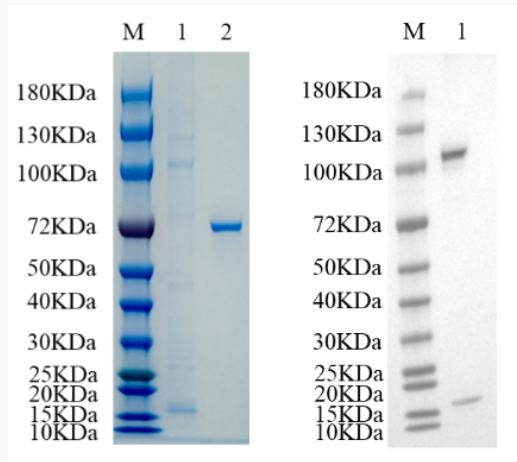
 45-1 Ramsey Road, Shirley, NY 11967, USA

**Protein Refseq** NP\_057009

**MIM** 616582

**UniProt ID** Q86X29

**Reducing 4%-20%  
SDS-PAGE (CBB  
stained) and WB  
(Anti-His Mouse  
Monoclonal  
antibody) analysis  
profiles of purified  
LSR**



1. LSR: 1  $\mu$ g 2. BSA: 1  $\mu$ g

 Tel: 1-631-559-9269 1-516-512-3133

 Email: [info@creative-biomart.com](mailto:info@creative-biomart.com)  Fax: 1-631-938-8127

 45-1 Ramsey Road, Shirley, NY 11967, USA