

Recombinant Human LSR protein, His & GST-tagged

Cat. No. LSR-8203H Lot. No. (See product label)

SPECIFICATION

Product Overview	Recombinant Human LSR aa. (Lys335~Arg589 (Accession # Q86X29)) fused with N-terminal His & GST tag was produced in E. coli cells.
Species	Human
Source	E.coli
ProteinLength	Lys335~Arg589
Form	Freeze-dried powder
Molecular Mass	68kDa as determined by SDS-PAGE reducing conditions.
Endotoxin	<1.0EU per 1ug (determined by the LAL method)
Purity	>90%
Characteristic	The isoelectric point is 7.2.
Applications	SDS-PAGE; WB; ELISA; IP.
Stability	The thermal stability is described by the loss rate of the target protein. The loss rate was determined by accelerated thermal degradation test, that is, incubate the protein at 37°C for 48h, and no obvious degradation and precipitation were observed. (Referring from China Biological Products Standard, which was calculated by the

 Tel: 1-631-559-9269 1-516-512-3133

 Email: info@creative-biomart.com  Fax: 1-631-938-8127

 45-1 Ramsey Road, Shirley, NY 11967, USA

Arrhenius equation.) The loss of this protein is less than 5% within the expiration date under appropriate storage condition.

Storage

Avoid repeated freeze/thaw cycles. Store at 2-8°C for one month. Aliquot and store at -80°C for 12 months.

Storage Buffer

Supplied as lyophilized form in 20mM Tris, 150mM NaCl, pH8.0, containing 1mM EDTA, 0.01% sarcosyl, 5% trehalose, and preservative.

Reconstitution

Reconstitute in ddH₂O.

GENE INFORMATION

Gene Name

LSR lipolysis stimulated lipoprotein receptor [Homo sapiens (human)]

Official Symbol

LSR

Synonyms

LSR; lipolysis stimulated lipoprotein receptor; ILDR3; LISCH7; lipolysis-stimulated lipoprotein receptor; LISCH protein; immunoglobulin-like domain containing receptor 3; lipolysis-stimulated remnant; liver-specific bHLH-Zip transcription factor

Gene ID

51599

mRNA Refseq

NM_001260489.1

Protein Refseq

NP_001247418.1

UniProt ID

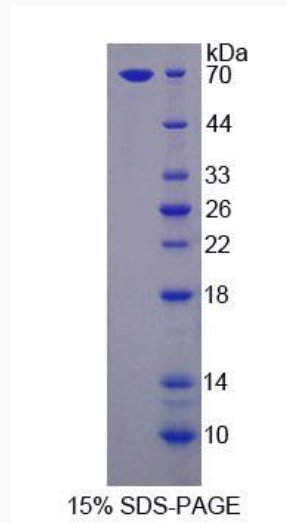
Q86X29

 Tel: 1-631-559-9269 1-516-512-3133

 Email: info@creative-biomart.com  Fax: 1-631-938-8127

 45-1 Ramsey Road, Shirley, NY 11967, USA

SDS-PAGE



 Tel: 1-631-559-9269 1-516-512-3133

 Email: info@creative-biomart.com  Fax: 1-631-938-8127

 45-1 Ramsey Road, Shirley, NY 11967, USA