

Recombinant Full Length Human LTA Protein, C-Flag-tagged

Cat. No. LTA-2131HFL Lot. No. (See product label)

SPECIFICATION

Product Overview	Recombinant Full Length Human LTA Protein, fused to Flag-tag at C-terminus, was expressed in Mammalian cells.
Species	Human
Source	Mammalian Cells
Description	The encoded protein, a member of the tumor necrosis factor family, is a cytokine produced by lymphocytes. The protein is highly inducible, secreted, and forms heterotrimers with lymphotoxin-beta which anchor lymphotoxin-alpha to the cell surface. This protein also mediates a large variety of inflammatory, immunostimulatory, and antiviral responses, is involved in the formation of secondary lymphoid organs during development and plays a role in apoptosis. Genetic variations in this gene are associated with susceptibility to leprosy type 4, myocardial infarction, non-Hodgkin's lymphoma, and psoriatic arthritis. Alternatively spliced transcript variants have been observed for this gene.
Form	25 mM Tris HCl, pH 7.3, 100 mM glycine, 10% glycerol.
Molecular Mass	18.6 kDa
AA Sequence	<p>MTPPERLFLPRVRGTTLHLLLLGLLLVLLPGAQGLPGVGLTPSAAQTARQHMKMHLA HSTLKPAAHLIGD PSKQNSLLWRANTDRAFLQDGFSLSNNSLLVPTSGIYFVYSQVV FSGKAYSPKATSSPLYLAHEVQLFSS QYPFHVPLLSSQKMVYPGLQEPWLHSMYH GAAFQLTQGDQLSTHTDGIPHLVLPSTVFFGAFAL TRTRPLEQKLISEEDLAANDIL</p>

 Tel: 1-631-559-9269 1-516-512-3133

 Email: info@creative-biomart.com  Fax: 1-631-938-8127

 45-1 Ramsey Road, Shirley, NY 11967, USA

	DYKDDDDKV
Purity	> 80% as determined by SDS-PAGE and Coomassie blue staining.
Stability	Stable for 12 months from the date of receipt of the product under proper storage and handling conditions. Avoid repeated freeze-thaw cycles.
Storage	Store at -80 centigrade.
Concentration	>50 ug/mL as determined by microplate BCA method.
Preparation	Recombinant protein was captured through anti-DDK affinity column followed by conventional chromatography steps.
Protein Families	Druggable Genome, Secreted Protein, Transmembrane
Protein Pathways	Antigen processing and presentation, Cytokine-cytokine receptor interaction, Type I diabetes mellitus
Full Length	Full L.
GENE INFORMATION	
Gene Name	LTA lymphotoxin alpha [Homo sapiens (human)]
Official Symbol	LTA
Synonyms	LT; TNFB; TNFSF1; TNLG1E
Gene ID	4049

 Tel: 1-631-559-9269 1-516-512-3133

 Email: info@creative-biomart.com  Fax: 1-631-938-8127

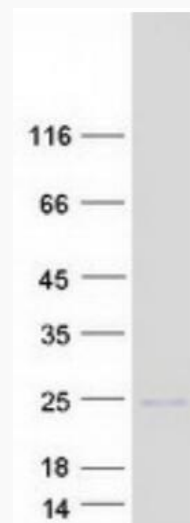
 45-1 Ramsey Road, Shirley, NY 11967, USA

mRNA Refseq [NM_000595.4](#)

Protein Refseq [NP_000586.2](#)

MIM [153440](#)

UniProt ID [P01374](#)



Coomassie blue staining of purified LTA protein.

 Tel: 1-631-559-9269 1-516-512-3133

 Email: info@creative-biomart.com  Fax: 1-631-938-8127

 45-1 Ramsey Road, Shirley, NY 11967, USA