

Recombinant Human LTA protein

Cat. No. LTA-310H Lot. No. (See product label)

SPECIFICATION

Product Overview	Recombinant Human LTA protein was expressed in Escherichia coli.
Species	Human
Source	E.coli
ProteinLength	171
Description	The encoded protein, a member of the tumor necrosis factor family, is a cytokine produced by lymphocytes. The protein is highly inducible, secreted, and forms heterotrimers with lymphotoxin-beta which anchor lymphotoxin-alpha to the cell surface. This protein also mediates a large variety of inflammatory, immunostimulatory, and antiviral responses, is involved in the formation of secondary lymphoid organs during development and plays a role in apoptosis. Genetic variations in this gene are associated with susceptibility to leprosy type 4, myocardial infarction, non-Hodgkin's lymphoma, and psoriatic arthritis. Alternatively spliced transcript variants have been observed for this gene.
Form	Lyophilized from a 0.2µm filtered concentrated solution in PBS, pH7.4, with 0.02 % Tween-20.
Bio-activity	Fully biologically active when compared to standard. The ED50 as determined by a cytotoxicity assay using murine L929 cells is less than 5 pg/ml, corresponding to a specific activity of > 2.0 × 10 ⁸ IU/mg in the presence of actinomycin D.

 Tel: 1-631-559-9269 1-516-512-3133

 Email: info@creative-biomart.com  Fax: 1-631-938-8127

 45-1 Ramsey Road, Shirley, NY 11967, USA

Molecular Mass	Approximately 18.7 kDa, a single non-glycosylated polypeptide chain containing 171 amino acids.
AA Sequence	LPGVGLTPSAAQTARQHPKMHLAHSTLKPA AHLIGDPSKQNSLLWRANTDRAFLQD GFSLSNNSLLVPTSGIYFVYSQVVFSGKAYSPKATSSPLYLAHEVQLFSSQYPFHVPL LSSQKMVYPGLQEPWLHSMYHGAAFQLTQGDQLSTHTDGIPHLVLS PSTVFFGAFA L
Endotoxin	Less than 0.1 EU/g of rHuTNF-β/TNFSF1 as determined by LAL method.
Purity	>96% by SDS-PAGE and HPLC analysis.
Storage	Use a manual defrost freezer and avoid repeated freeze-thaw cycles. 12 months from date of receipt, -20 to -70 centigrade as supplied. 1 month, 2 to 8 centigrade under sterile conditions after reconstitution. 3 months, -20 to -70 centigrade under sterile conditions after reconstitution.
Reconstitution	We recommend that this vial be briefly centrifuged prior to opening to bring the contents to the bottom. Reconstitute in sterile distilled water or aqueous buffer containing 0.1 % BSA to a concentration of 0.1-1.0 mg/mL. Stock solutions should be apportioned into working aliquots and stored at ≤-20 centigrade. Further dilutions should be made in appropriate buffered solutions.

GENE INFORMATION

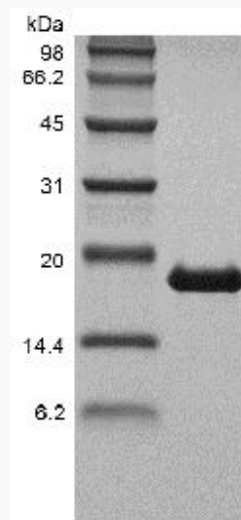
Gene Name	LTA
Official Symbol	LTA
Synonyms	LTA; lymphotoxin alpha (TNF superfamily, member 1); TNFB; lymphotoxin-alpha; LT; TNFSF1; LT-alpha; TNF-beta; tumor necrosis factor beta; tumor necrosis factor ligand

 Tel: 1-631-559-9269 1-516-512-3133

 Email: info@creative-biomart.com  Fax: 1-631-938-8127

 45-1 Ramsey Road, Shirley, NY 11967, USA

superfamily member 1;

Gene ID 4049**mRNA Refseq** NM_000595**Protein Refseq** NP_000586**MIM** 153440**UniProt ID** P01374**SDS-PAGE of LTA-310H** Tel: 1-631-559-9269 1-516-512-3133 Email: info@creative-biomart.com  Fax: 1-631-938-8127 45-1 Ramsey Road, Shirley, NY 11967, USA