

Active Recombinant Human LTA protein, His-tagged

Cat. No. LTA-311H Lot. No. (See product label)

SPECIFICATION

Product Overview	Active Recombinant Human LTA protein(P01374)(36~205 aa), fused with N-terminal His tag, was expressed in E.coli.
Species	Human
Source	E.coli
ProteinLength	36-205 aa
Form	Lyophilized from sterile PBS, pH7.4, containing 0.01% SKL, 1mM DTT, 5% Trehalose and Proclin300.
Bio-activity	TNF- β , a member of the tumor necrosis factor family, is a potent lymphoid factor that exerts cytotoxic effects on a wide range of tumor cells. The biological effects of TNF- β are very similar to TNF- α , due to the similarity of molecular structure and the receptors. As reported, TNF- β could inhibit the proliferation and induce necrosis of A549 cells, and the concentration of IL-1 β in cell supernatant will increase after stimulation. Therefore, A549 cells were incubated in DMEM with TNF- β (10ng/mL) for 8h, 24h, 48h, 72h, then cells were observed by inverted microscope and IL-1 β was detected in the cell supernatant by ELISA .
Molecular Mass	22.2kDa
Endotoxin	<1.0EU per 1 μ g (determined by the LAL method).

 Tel: 1-631-559-9269 1-516-512-3133

 Email: info@creative-biomart.com  Fax: 1-631-938-8127

 45-1 Ramsey Road, Shirley, NY 11967, USA

Purity	> 97% as determined by SDS-PAGE.
Storage	Avoid repeated freeze/thaw cycles. Store at -20°C for 12 months. Aliquot and store at -80°C for 12 months.
Reconstitution	Reconstitute in 10mM PBS (pH7.4) to a concentration of 0.1-1.0 mg/mL. Do not vortex.

GENE INFORMATION

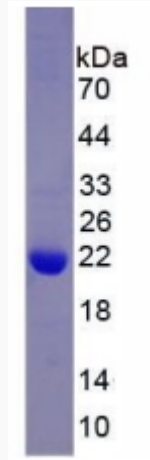
Gene Name	LTA lymphotoxin alpha (TNF superfamily, member 1) [Homo sapiens]
Official Symbol	LTA
Synonyms	LTA; lymphotoxin alpha (TNF superfamily, member 1); TNFB; lymphotoxin-alpha; LT; TNFSF1; LT-alpha; TNF-beta; tumor necrosis factor beta; tumor necrosis factor ligand superfamily member 1;
Gene ID	4049
mRNA Refseq	NM_000595
Protein Refseq	NP_000586
MIM	153440
UniProt ID	P01374

 Tel: 1-631-559-9269 1-516-512-3133

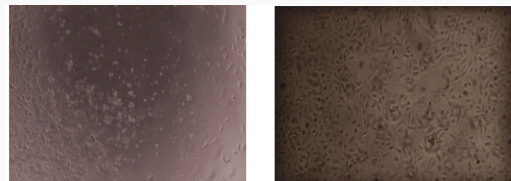
 Email: info@creative-biomart.com  Fax: 1-631-938-8127

 45-1 Ramsey Road, Shirley, NY 11967, USA

SDS-PAGE



Activity



 Tel: 1-631-559-9269 1-516-512-3133

 Email: info@creative-biomart.com  Fax: 1-631-938-8127

 45-1 Ramsey Road, Shirley, NY 11967, USA