

Recombinant Human LTA Full Length protein, His-tagged

Cat. No. LTA-4367H Lot. No. (See product label)

SPECIFICATION

Product Overview	Recombinant Human LTA protein(35-205aa), fused with N-terminal His tag, was expressed in HEK293.
Species	Human
Source	HEK293
ProteinLength	35-205aa
Tag	N-His
Form	Liquid in sterile PBS, pH7.4.
Molecular Mass	The protein has a calculated MW of 21 kDa.
Endotoxin	<1.0EU per 1µg (determined by the LAL method).
Purity	> 95 % as determined by SDS-PAGE.
Storage	Store it under sterile conditions at -80°C. It is recommended that the protein be aliquoted for optimal storage. Avoid repeated freeze-thaw cycles.
Concentration	1.0 mg/ml.
Reconstitution	Centrifuge the vial at 4°C before opening to recover the entire contents.

 Tel: 1-631-559-9269 1-516-512-3133

 Email: info@creative-biomart.com  Fax: 1-631-938-8127

 45-1 Ramsey Road, Shirley, NY 11967, USA

AA Sequence

HHHHHHHHHLLVPRGSRTLPGVGLTPSAAQTARQHPKMHLAHSTLKPA AHLIGDPS
 KQNSLLWRANTDRAFLQDGFSLSNLLVPTSGIYFVYSQVVFSGKAYSPKATSSPL
 YLAHEVQLFSSQYPFHVPLLSSQKMVYPGLQEPWLHSMYHGAAFQLTQGDQLSTH
 TDGIPHLVLPSTVFFGAFAL

GENE INFORMATION

Gene Name [LTA lymphotoxin alpha \(TNF superfamily, member 1\) \[Homo sapiens \]](#)

Official Symbol [LTA](#)

Synonyms LTA; lymphotoxin alpha (TNF superfamily, member 1); TNFB; lymphotoxin-alpha; LT; TNFSF1; LT-alpha; TNF-beta; tumor necrosis factor beta; tumor necrosis factor ligand superfamily member 1;

Gene ID [4049](#)

mRNA Refseq [NM_000595](#)

Protein Refseq [NP_000586](#)

MIM [153440](#)

UniProt ID [P01374](#)

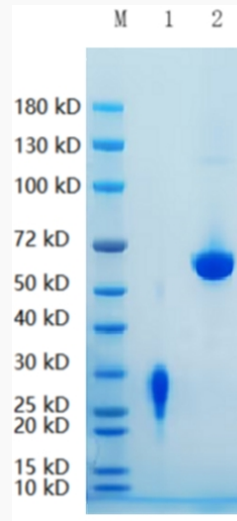
 Tel: 1-631-559-9269 1-516-512-3133

 Email: info@creative-biomart.com  Fax: 1-631-938-8127

 45-1 Ramsey Road, Shirley, NY 11967, USA



SDS-PAGE



Tel: 1-631-559-9269 1-516-512-3133

Email: info@creative-biomart.com Fax: 1-631-938-8127

45-1 Ramsey Road, Shirley, NY 11967, USA