

Recombinant Human LTA protein, His-Avi-tagged, Biotinylated

Cat. No. LTA-7253H Lot. No. (See product label)

SPECIFICATION

| | |
|--------------------------|--|
| Product Overview | Recombinant Human LTA protein(P01374)(35-205aa), fused with N-terminal His and Avi tag, was expressed in HEK293. |
| Species | Human |
| Source | HEK293 |
| ProteinLength | 35-205aa |
| Tag | N-His-Avi |
| Conjugation/Label | Biotin |
| Form | If the delivery form is liquid, the default storage buffer is Tris/PBS-based buffer, 5%-50% glycerol. If the delivery form is lyophilized powder, the buffer before lyophilization is Tris/PBS-based buffer, 6% Trehalose, pH 8.0. |
| Molecular Mass | 22.7 kDa |
| Purity | Greater than 90% as determined by SDS-PAGE. Greater than 90% as determined by SEC-HPLC. |
| Storage | Store at -20°C/-80°C upon receipt, aliquoting is necessary for mutiple use. Avoid repeated freeze-thaw cycles. |

 Tel: 1-631-559-9269 1-516-512-3133

 Email: info@creative-biomart.com  Fax: 1-631-938-8127

 45-1 Ramsey Road, Shirley, NY 11967, USA

| | |
|-----------------------|--|
| Reconstitution | We recommend that this vial be briefly centrifuged prior to opening to bring the contents to the bottom. Please reconstitute protein in deionized sterile water to a concentration of 0.1-1.0 mg/mL. We recommend to add 5-50% of glycerol (final concentration) and aliquot for long-term storage at -20°C/-80°C. |
| AA Sequence | LPGVGLTPSAAQTARQHPKMHLAHSTLKPA AHLIGDPSKQNSLLWRANTDRAFLQD GFSLSNNSLLVPTSGIYFVYSQVVFSGKAYSPKATSSPLYLAHEVQLFSSQYPFHVPL LSSQKMVYPGLQEPWLHSMYHGAAFQLTQGDQLSTHTDGIPLVLS PSTVFFGAFAL |
| Conjugation | Biotin |

GENE INFORMATION

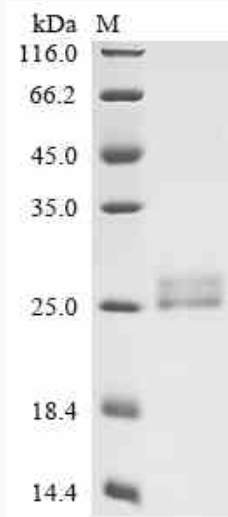
| | |
|------------------------|---|
| Gene Name | LTA lymphotoxin alpha (TNF superfamily, member 1) [Homo sapiens] |
| Official Symbol | LTA |
| Synonyms | LTA; lymphotoxin alpha (TNF superfamily, member 1); TNFB; lymphotoxin-alpha; LT; TNFSF1; LT-alpha; TNF-beta; tumor necrosis factor beta; tumor necrosis factor ligand superfamily member 1; |
| Gene ID | 4049 |
| mRNA Refseq | NM_000595 |
| Protein Refseq | NP_000586 |
| MIM | 153440 |
| UniProt ID | P01374 |

 Tel: 1-631-559-9269 1-516-512-3133

 Email: info@creative-biomart.com  Fax: 1-631-938-8127

 45-1 Ramsey Road, Shirley, NY 11967, USA

SDS-PAGE



 Tel: 1-631-559-9269 1-516-512-3133

 Email: info@creative-biomart.com  Fax: 1-631-938-8127

 45-1 Ramsey Road, Shirley, NY 11967, USA