

Recombinant Human LTA4H Protein (Met1-Asp611), C-His tagged

Cat. No. LTA4H-4464H Lot. No. (See product label)

SPECIFICATION

Product Overview	Recombinant human LTA4H (Met1-Asp611) fused with the C-terminal His tag was expressed in Mammalian cells.
Species	Human
Source	Mammalian Cells
ProteinLength	Met1-Asp611
Form	Lyophilized powder/frozen liquid
Molecular Mass	67.21 kDa
Endotoxin	< 1.0 EU/μg of the protein as determined by the LAL method.
Purity	>90% as determined by SDS-PAGE.
Notes	For research use only.
Storage	Use a manual defrost freezer and avoid repeated freeze thaw cycles. Store at 2 to 8 centigrade for one week. Store at -20 to -80 centigrade for twelve months from the date of receipt.
Storage Buffer	Supplied as solution form in PBS or lyophilized from PBS.

 Tel: 1-631-559-9269 1-516-512-3133

 Email: info@creative-biomart.com  Fax: 1-631-938-8127

 45-1 Ramsey Road, Shirley, NY 11967, USA

Reconstitution Reconstitute in sterile water for a stock solution.

Shipping They are shipped out with dry ice/blue ice unless customers require otherwise.

GENE INFORMATION

Gene Name LTA4H leukotriene A4 hydrolase [Homo sapiens (human)]

Official Symbol LTA4H

Synonyms LTA4H; leukotriene A4 hydrolase; leukotriene A-4 hydrolase; LTA-4 hydrolase; FLJ17564;

Gene ID 4048

mRNA Refseq NM_000895

Protein Refseq NP_000886

MIM 151570

UniProt ID P09960

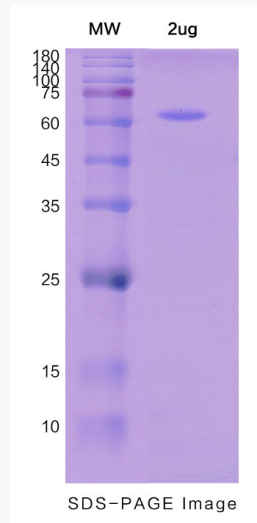
 Tel: 1-631-559-9269 1-516-512-3133

 Email: info@creative-biomart.com  Fax: 1-631-938-8127

 45-1 Ramsey Road, Shirley, NY 11967, USA



SDS-PAGE



Tel: 1-631-559-9269 1-516-512-3133

Email: info@creative-biomart.com Fax: 1-631-938-8127

45-1 Ramsey Road, Shirley, NY 11967, USA