

## Recombinant Human LTA4H Protein, His-tagged

Cat. No. LTA4H-51H Lot. No. (See product label)

### SPECIFICATION

<b>Product Overview</b>	Recombinant human LTA4H(1-610) protein with a C-terminal His-tag was expressed in E. coli.
<b>Species</b>	Human
<b>Source</b>	E.coli
<b>ProteinLength</b>	1-610
<b>Description</b>	The protein encoded by this gene is an enzyme that contains both hydrolase and aminopeptidase activities. The hydrolase activity is used in the final step of the biosynthesis of leukotriene B4, a proinflammatory mediator. The aminopeptidase activity has been shown to degrade proline-glycine-proline (PGP), a neutrophil chemoattractant and biomarker for chronic obstructive pulmonary disease (COPD). Several transcript variants encoding different isoforms have been found for this gene.
<b>Molecular Mass</b>	69 kDa
<b>Purity</b>	≥90% estimated by SDS-PAGE
<b>Unit Definition</b>	One unit is the amount of enzyme required to release 1 mmol per min of 4-nitro-anilide (pNA) at 26 centigrade in a reaction containing 40 mM L-Ala-pNA in 50 mM Tris pH 8.0, measured by absorbance at 405 nm.
<b>Applications</b>	Enzyme Activity

 Tel: 1-631-559-9269 1-516-512-3133

 Email: [info@creative-biomart.com](mailto:info@creative-biomart.com)  Fax: 1-631-938-8127

 45-1 Ramsey Road, Shirley, NY 11967, USA



<b>Stability</b>	≥ 1 year
<b>Storage</b>	Store it at -80 centigrade
<b>Storage Buffer</b>	100 mM Tris, pH 8.0, with 100 mM potassium chloride and 20% glycerol

## GENE INFORMATION

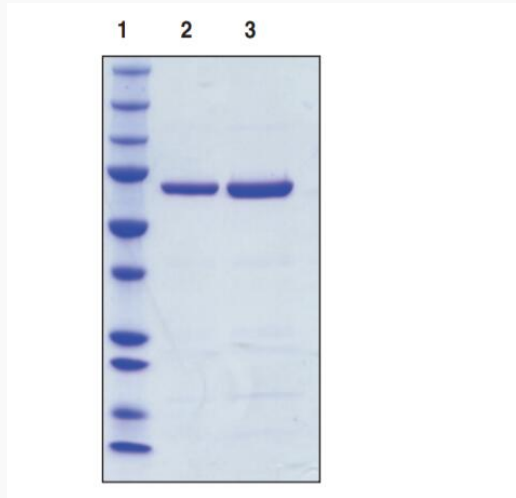
<b>Gene Name</b>	LTA4H leukotriene A4 hydrolase [ Homo sapiens (human) ]
<b>Official Symbol</b>	LTA4H
<b>Synonyms</b>	LTA4H; leukotriene A4 hydrolase; leukotriene A-4 hydrolase; LTA-4 hydrolase; testicular secretory protein Li 27
<b>Gene ID</b>	4048
<b>mRNA Refseq</b>	NM_000895
<b>Protein Refseq</b>	NP_000886
<b>MIM</b>	151570
<b>UniProt ID</b>	P09960

 Tel: 1-631-559-9269 1-516-512-3133

 Email: [info@creative-biomart.com](mailto:info@creative-biomart.com)  Fax: 1-631-938-8127

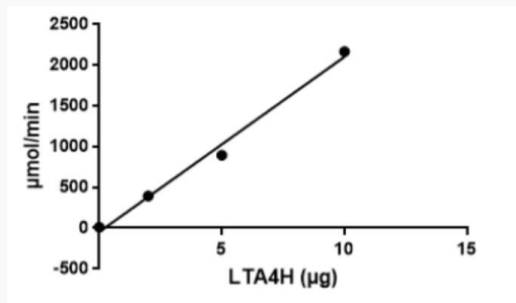
 45-1 Ramsey Road, Shirley, NY 11967, USA

### SDS-PAGE Analysis of LTA4H



Lane 1: MW Markers; Lane 2: LTA4 Hydrolase (2 µg); Lane 3: LTA4 Hydrolase (4 µg). Representative gel image shown; actual purity may vary between each batch.

### LTA4 Hydrolase Activity



Tel: 1-631-559-9269 1-516-512-3133

Email: [info@creative-biomart.com](mailto:info@creative-biomart.com) Fax: 1-631-938-8127

45-1 Ramsey Road, Shirley, NY 11967, USA