

Recombinant Human LTBP1 Protein, GST-tagged

Cat. No. LTBP1-4591H Lot. No. (See product label)

SPECIFICATION

Product Overview	Human LTBP1 partial ORF (NP_000618, 403 a.a. - 500 a.a.) recombinant protein with GST-tag at N-terminal.
Species	Human
Source	Wheat Germ
Description	The protein encoded by this gene belongs to the family of latent TGF-beta binding proteins (LTBPs). The secretion and activation of TGF-betas is regulated by their association with latency-associated proteins and with latent TGF-beta binding proteins. The product of this gene targets latent complexes of transforming growth factor beta to the extracellular matrix, where the latent cytokine is subsequently activated by several different mechanisms. Alternatively spliced transcript variants encoding different isoforms have been identified. [provided by RefSeq]
Molecular Mass	36.52 kDa
AA Sequence	CPGGMGYTVSGVHRRRPIHHHVGKGPVFKPKNTQPVAKSTHPPPLPAKEEPVEAL TFSREHGPVVAEPEVATAPPEKEIPSLDQEKTLEPGQPQLS
Applications	Enzyme-linked Immunoabsorbent Assay Western Blot (Recombinant protein) Antibody Production Protein Array

 Tel: 1-631-559-9269 1-516-512-3133

 Email: info@creative-biomart.com  Fax: 1-631-938-8127

 45-1 Ramsey Road, Shirley, NY 11967, USA

Notes	Best use within three months from the date of receipt of this protein.
Storage	Store at -80 centigrade. Aliquot to avoid repeated freezing and thawing.
Storage Buffer	50 mM Tris-HCl, 10 mM reduced Glutathione, pH=8.0 in the elution buffer.

GENE INFORMATION

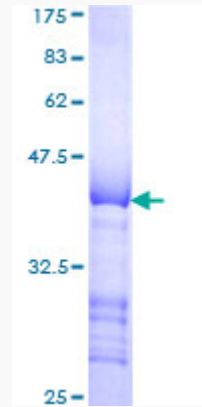
Gene Name	LTBP1 latent transforming growth factor beta binding protein 1 [Homo sapiens]
Official Symbol	LTBP1
Synonyms	LTBP1; latent transforming growth factor beta binding protein 1; latent-transforming growth factor beta-binding protein 1; TGF beta1 BP 1; LTBP-1; TGF-beta1-BP-1; transforming growth factor beta-1-binding protein 1; MGC163161;
Gene ID	4052
mRNA Refseq	NM_000627
Protein Refseq	NP_000618
MIM	150390
UniProt ID	Q14766

 Tel: 1-631-559-9269 1-516-512-3133

 Email: info@creative-biomart.com  Fax: 1-631-938-8127

 45-1 Ramsey Road, Shirley, NY 11967, USA

**Quality Control
Testing**



12.5% SDS-PAGE Stained with Coomassie Blue

 Tel: 1-631-559-9269 1-516-512-3133

 Email: info@creative-biomart.com  Fax: 1-631-938-8127

 45-1 Ramsey Road, Shirley, NY 11967, USA