

Recombinant Human LTBP2 Protein, GST-tagged

Cat. No. LTBP2-4590H Lot. No. (See product label)

SPECIFICATION

Product Overview	Human LTBP2 partial ORF (NP_000419, 1709 a.a. - 1818 a.a.) recombinant protein with GST-tag at N-terminal.
Species	Human
Source	Wheat Germ
Description	The protein encoded by this gene belongs to the family of latent transforming growth factor (TGF)-beta binding proteins (LTBP), which are extracellular matrix proteins with multi-domain structure. This protein is the largest member of the LTBP family possessing unique regions and with most similarity to the fibrillins. It has thus been suggested that it may have multiple functions: as a member of the TGF-beta latent complex, as a structural component of microfibrils, and a role in cell adhesion. [provided by RefSeq]
Molecular Mass	37.84 kDa
AA Sequence	LQPSELQPHYVASHPEPPAGFEGQLQAEECGILNGCENGRCVVRVREGYTCDCFEGF QLDAAHMACVDVNECDDLNGPAVLCVHGYCENTEGSYRCHCSPGYVAEAGPPHC T
Applications	Enzyme-linked Immunoabsorbent Assay Western Blot (Recombinant protein) Antibody Production Protein Array

 Tel: 1-631-559-9269 1-516-512-3133

 Email: info@creative-biomart.com  Fax: 1-631-938-8127

 45-1 Ramsey Road, Shirley, NY 11967, USA

Notes	Best use within three months from the date of receipt of this protein.
Storage	Store at -80 centigrade. Aliquot to avoid repeated freezing and thawing.
Storage Buffer	50 mM Tris-HCl, 10 mM reduced Glutathione, pH=8.0 in the elution buffer.

GENE INFORMATION

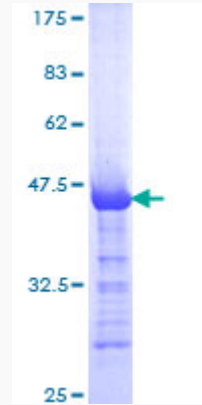
Gene Name	LTBP2 latent transforming growth factor beta binding protein 2 [Homo sapiens]
Official Symbol	LTBP2
Synonyms	LTBP2; latent transforming growth factor beta binding protein 2; C14orf141, chromosome 14 open reading frame 141 , LTBP3; latent-transforming growth factor beta-binding protein 2; LTBP-2; GLC3D; LTBP3; MSTP031; C14orf141;
Gene ID	4053
mRNA Refseq	NM_000428
Protein Refseq	NP_000419
MIM	602091
UniProt ID	Q14767

 Tel: 1-631-559-9269 1-516-512-3133

 Email: info@creative-biomart.com  Fax: 1-631-938-8127

 45-1 Ramsey Road, Shirley, NY 11967, USA

**Quality Control
Testing**



12.5% SDS-PAGE Stained with Coomassie Blue

 Tel: 1-631-559-9269 1-516-512-3133

 Email: info@creative-biomart.com  Fax: 1-631-938-8127

 45-1 Ramsey Road, Shirley, NY 11967, USA