

## Recombinant Human LTBR protein, hFc-tagged

**Cat. No.** LTBR-0360H    **Lot. No.** (See product label)

### SPECIFICATION

<b>Product Overview</b>	Recombinant Human LTBR protein(P36941-1)(Gln31-Met227), fused with C-terminal hFc tag, was expressed in HEK293.
<b>Species</b>	Human
<b>Source</b>	HEK293
<b>ProteinLength</b>	Gln31-Met227
<b>Tag</b>	C-hFc
<b>Form</b>	Supplied as 0.22µm filtered solution in PBS (pH 7.4).
<b>Bio-activity</b>	Immobilized Human LIGHT, His Tag at 1 ug/ml (100 ul/Well) on the plate. Dose response curve for Human LTBR, hFc Tag with the EC50 13.8 ng/ml determined by ELISA (QC Test).
<b>Molecular Mass</b>	The protein has a predicted MW of 48.5 kDa. Due to glycosylation, the protein migrates to 60-70 kDa based on Tris-Bis PAGE result.
<b>Endotoxin</b>	Less than 1EU per µg by the LAL method.
<b>Purity</b>	> 95% as determined by Tris-Bis PAGE;> 95% as determined by HPLC
<b>Storage</b>	Valid for 12 months from date of receipt when stored at -80°C. Recommend to aliquot

 Tel: 1-631-559-9269    1-516-512-3133

 Email: [info@creative-biomart.com](mailto:info@creative-biomart.com)     Fax: 1-631-938-8127

 45-1 Ramsey Road, Shirley, NY 11967, USA

the protein into smaller quantities for optimal storage. Please do not repeated freeze-thaw cycles.

**Reconstitution**

It is recommended that sterile water be added to the vial to prepare a stock solution of 0.2 ug/ul. Centrifuge the vial at 4°C before opening to recover the entire contents.

## GENE INFORMATION

**Gene Name** [LTBR lymphotoxin beta receptor \(TNFR superfamily, member 3\) \[ Homo sapiens \]](#)

**Official Symbol** [LTBR](#)

**Synonyms**

LTBR; lymphotoxin beta receptor (TNFR superfamily, member 3); D12S370; tumor necrosis factor receptor superfamily member 3; TNF R III; TNFCR; TNFR RP; TNFR2 RP; TNFRSF3; TNF-RIII; TNFR-III; lymphotoxin B receptor; lymphotoxin-beta receptor; TNFR superfamily, member 3; tumor necrosis factor C receptor; tumor necrosis factor receptor type III; tumor necrosis factor receptor 2-related protein; tumor necrosis factor receptor superfamily, member 3; CD18; TNFR-RP; TNFR2-RP; LT-BETA-R; TNF-R-III;

**Gene ID** [4055](#)

**mRNA Refseq** [NM\\_002342](#)

**Protein Refseq** [NP\\_002333](#)

**MIM** [600979](#)

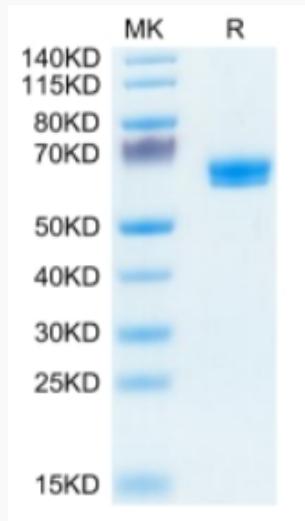
**UniProt ID** [P36941](#)

 Tel: 1-631-559-9269 1-516-512-3133

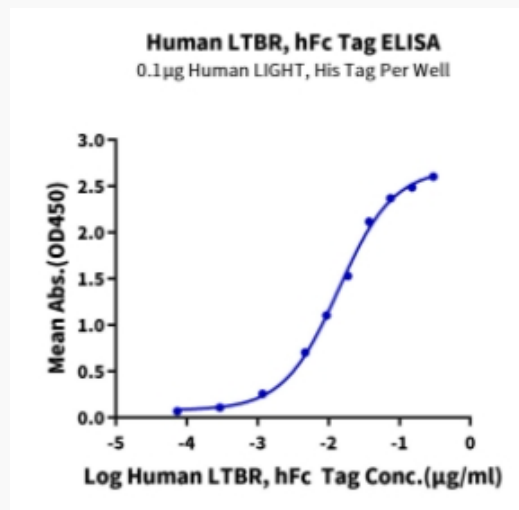
 Email: [info@creative-biomart.com](mailto:info@creative-biomart.com)  Fax: 1-631-938-8127

 45-1 Ramsey Road, Shirley, NY 11967, USA

**Tris-Bis PAGE**



**ELISA Data**



 Tel: 1-631-559-9269 1-516-512-3133

 Email: [info@creative-biomart.com](mailto:info@creative-biomart.com)  Fax: 1-631-938-8127

 45-1 Ramsey Road, Shirley, NY 11967, USA