

## Recombinant Human LTBR Protein (Gln31-Met227), N-His tagged

Cat. No. LTBR-4467H    Lot. No. (See product label)

### SPECIFICATION

<b>Product Overview</b>	Recombinant human LTBR (Gln31-Met227) fused with the N-His tag was expressed in E. coli.
<b>Species</b>	Human
<b>Source</b>	E.coli
<b>ProteinLength</b>	Gln31-Met227
<b>Form</b>	Lyophilized powder/frozen liquid
<b>Molecular Mass</b>	24.06 kDa
<b>Purity</b>	>90% as determined by SDS-PAGE.
<b>Notes</b>	For research use only.
<b>Storage</b>	Use a manual defrost freezer and avoid repeated freeze thaw cycles. Store at 2 to 8 centigrade for one week. Store at -20 to -80 centigrade for twelve months from the date of receipt.
<b>Storage Buffer</b>	0.01M PBS, pH 7.4, 0.02% NLS
<b>Reconstitution</b>	Reconstitute in sterile water for a stock solution.

 Tel: 1-631-559-9269    1-516-512-3133

 Email: [info@creative-biomart.com](mailto:info@creative-biomart.com)     Fax: 1-631-938-8127

 45-1 Ramsey Road, Shirley, NY 11967, USA

**Shipping**

They are shipped out with dry ice/blue ice unless customers require otherwise.

**GENE INFORMATION**
**Gene Name**

LTBR lymphotoxin beta receptor (TNFR superfamily, member 3) [ Homo sapiens (human) ]

**Official Symbol**

LTBR

**Synonyms**

LTBR; lymphotoxin beta receptor (TNFR superfamily, member 3); D12S370; tumor necrosis factor receptor superfamily member 3; TNF R III; TNFCR; TNFR RP; TNFR2 RP; TNFRSF3; TNF-RIII; TNFR-III; lymphotoxin B receptor; lymphotoxin-beta receptor; TNFR superfamily, member 3; tumor necrosis factor C receptor; tumor necrosis factor receptor type III; tumor necrosis factor receptor 2-related protein; tumor necrosis factor receptor superfamily, member 3; CD18; TNFR-RP; TNFR2-RP; LT-BETA-R; TNF-R-III;

**Gene ID**

4055

**mRNA Refseq**

NM\_002342

**Protein Refseq**

NP\_002333

**MIM**

600979

**UniProt ID**

P36941

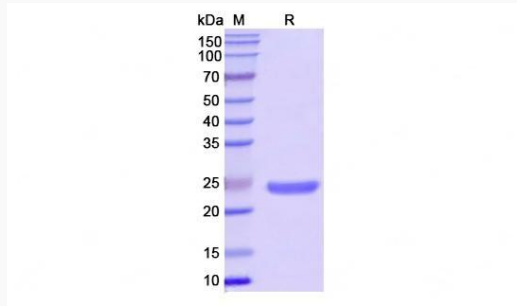
 Tel: 1-631-559-9269 1-516-512-3133

 Email: [info@creative-biomart.com](mailto:info@creative-biomart.com)  Fax: 1-631-938-8127

 45-1 Ramsey Road, Shirley, NY 11967, USA



SDS-PAGE



Tel: 1-631-559-9269 1-516-512-3133

Email: [info@creative-biomart.com](mailto:info@creative-biomart.com) Fax: 1-631-938-8127

45-1 Ramsey Road, Shirley, NY 11967, USA