

## Recombinant Human LTBR protein, His-tagged

Cat. No. LTBR-5243H Lot. No. (See product label)

### SPECIFICATION

<b>Product Overview</b>	Recombinant Human LTBR protein(P36941)(31-224aa), fused to N-terminal His tag, was expressed in E. coli.
<b>Species</b>	Human
<b>Source</b>	E.coli
<b>ProteinLength</b>	31-224aa
<b>Form</b>	If the delivery form is liquid, the default storage buffer is Tris/PBS-based buffer, 5%-50% glycerol. If the delivery form is lyophilized powder, the buffer before lyophilization is Tris/PBS-based buffer, 6% Trehalose, pH 8.0.
<b>Molecular Mass</b>	25.4 kDa
<b>Purity</b>	Greater than 90% as determined by SDS-PAGE.
<b>Storage</b>	Store at -20°C/-80°C upon receipt, aliquoting is necessary for multiple use. Avoid repeated freeze-thaw cycles.
<b>Reconstitution</b>	Please reconstitute protein in deionized sterile water to a concentration of 0.1-1.0 mg/mL. We recommend to add 5-50% of glycerol (final concentration) and aliquot for long-term storage at -20°C/-80°C. Our default final concentration of glycerol is 50%.

 Tel: 1-631-559-9269 1-516-512-3133

 Email: [info@creative-biomart.com](mailto:info@creative-biomart.com)  Fax: 1-631-938-8127

 45-1 Ramsey Road, Shirley, NY 11967, USA

## GENE INFORMATION

**Gene Name** LTBR lymphotoxin beta receptor (TNFR superfamily, member 3) [ Homo sapiens ]

**Official Symbol** LTBR

**Synonyms** LTBR; lymphotoxin beta receptor (TNFR superfamily, member 3); D12S370; tumor necrosis factor receptor superfamily member 3; TNF R III; TNFCR; TNFR RP; TNFR2 RP; TNFRSF3; TNF-RIII; TNFR-III; lymphotoxin B receptor; lymphotoxin-beta receptor; TNFR superfamily, member 3; tumor necrosis factor C receptor; tumor necrosis factor receptor type III; tumor necrosis factor receptor 2-related protein; tumor necrosis factor receptor superfamily, member 3; CD18; TNFR-RP; TNFR2-RP; LT-BETA-R; TNF-R-III;

**Gene ID** 4055

**mRNA Refseq** NM\_002342

**Protein Refseq** NP\_002333

**MIM** 600979

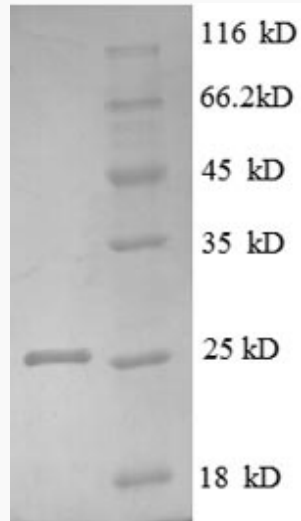
**UniProt ID** P36941

 Tel: 1-631-559-9269 1-516-512-3133

 Email: [info@creative-biomart.com](mailto:info@creative-biomart.com)  Fax: 1-631-938-8127

 45-1 Ramsey Road, Shirley, NY 11967, USA

**SDS-PAGE**



 Tel: 1-631-559-9269 1-516-512-3133

 Email: [info@creative-biomart.com](mailto:info@creative-biomart.com)  Fax: 1-631-938-8127

 45-1 Ramsey Road, Shirley, NY 11967, USA